

PROFESSIONAL
JAG
AGRI PARTS

KATALOG 2018/1

TRÓJPUNKTOWY

UKŁAD ZAWIESZENIA



www.gaska.com.pl



TRÓJPUNKTOWY

UKŁAD ZAWIESZENIA

Trójpunktowy układ zawieszenia to układ dźwigniowy stosowany w ciągnikach rolniczych do agregowania maszyn i urządzeń zawieszanych na hydraulicznym podnośniku.

Układ taki umożliwia podnoszenie narzędzi w położeniu transportowe i odpowiednie ustawienie go w położeniu roboczym. Narzędzia są połączone z ciągnikiem w trzech punktach, na dwóch hydraulicznie podnoszonych belkach dolnych (lewej i prawej) z łącznikiem centralnym. Przeguby kuliste umieszczone w belkach i łączniku centralnym umożliwiają ruchy narzędzi we wszystkich kierunkach.

Do sterowania TUZ-em (podnośnikiem) jest wykorzystywany rozdzielacz hydrauliczny. Sterowanie to może odbywać się mechanicznie za pomocą dźwigni lub elektronicznie.

TUZ znajduje się z tyłu ciągnika rolniczego, ale istnieje możliwość montażu także z przodu, co daje ogromne możliwości zestawiania w grupy maszyn i urządzeń rolniczych, a co za tym idzie oszczędzanie czasu i kosztów podczas uprawy roli.



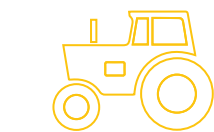
O A S O R T Y M E N C I E

Niniejsza edycja Katalogu 2018 „Trójpunktowy Układu Zawieszenia” została opracowana przez firmę J.A. Gąska Spółka Jawna. Katalog grupuje części wykorzystywane przy łączeniu ciągników rolniczych z maszynami i urządzeniami zawieszanymi na podnośniku hydraulicznym. Prezentujemy w nim najczęściej używane elementy, które zostały zestawione w poszczególnych rozdziałach katalogu. Zdjęcia i grafiki wraz z podanymi parametrami i numerami ułatwią identyfikację.

Z A M Ó W I E N I A

Korzystając z naszego Katalogu trójpunktowego układu zawieszenia, łatwo znajdziesz interesujące cię części do TUZ-a.

- zamówiony i dostępny towar wysyłamy firmami kurierskimi w 24h
- informacje na temat części zamiennych znajdziesz na naszej stronie www.gaska.com.pl
- w przypadku poszukiwania części nietypowych, dzwoń do naszych handlowców, którzy chętnie udzielą niezbędnych informacji.



J.A. Gąska Sp. J.
www.gaska.com.pl
Zapraszamy do współpracy.

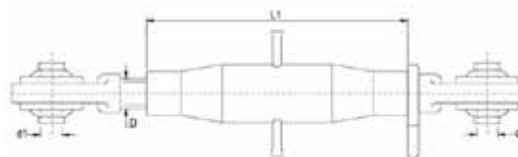
S P I S T R E Ś C I

	Łączniki górne	4-14
	Haki łącznika górnego	15-16
	Akcesoria	17-20
	Zestawy regeneracyjne	21
	Sworznie i zawlecзки	22-41
	Główki łącznika centralnego	42-43
	Widelki	44-45
	Cięgna stabilizujące	46-47
	Przeguby kulowe	48-50
	Ramiona regulowane	51
	Wieszaki	52-54
	Kule	55-59
	Belki polowe	60-64
	Osie nośne	65
	Śruby rzymskie	66

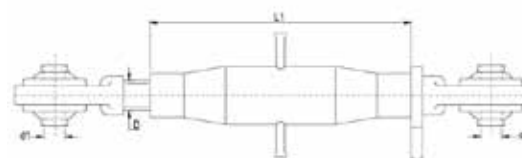


Twój dostawca części zamiennych
do zachodnich maszyn rolniczych.

Łączniki górne

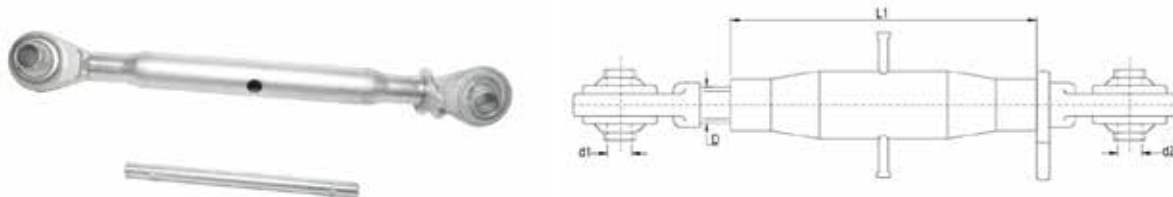


NUMER	KAT	L1	D
JAG98-0215	0-0 (16)	190	M20X2.5
JAG98-0216	0-0 (16)	250	M20X2.5
JAG98-0217	0-0 (16)	400	M20X2.5
JAG98-0218	1-1	120	M22X2.5
JAG98-0219	1-1	160	M22X2.5
JAG98-0220	1-1	180	M22X2.5



NUMER	KAT	L1	D
JAG98-0383	2-3	700	M36X3
JAG98-0384	3-3	700	M36X3
JAG98-0385	2-2	800	M36X3
JAG98-0386	2-3	800	M36X3
JAG98-0387	3-3	800	M36X3
JAG98-0388	2-2	1000	M36X3
JAG98-0389	2-3	1000	M36X3
JAG98-0390	3-3	1000	M36X3
JAG98-0391	2-2	400	M40X3
JAG98-0028	2-2	500	M40X3
JAG98-0392	2-2	520	M40X3
JAG98-0393	2-2	580	M40X3
JAG98-0394	2-2	620	M40X3
JAG98-0395	3-3	400	M40X3
JAG98-0396	3-3	500	M40X3
JAG98-0397	3-3	520	M40X3
JAG98-0398	3-3	580	M40X3
JAG98-0399	3-3	620	M40X3

Łączniki górne

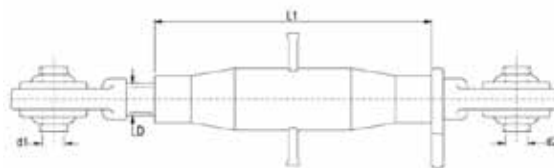


NUMER	KAT	L1	D
JAG98-0221	1-1	220	M22X2.5
JAG98-0001	1-1	230	M22X2.5
JAG98-0002	1-1	300	M22X2.5
JAG98-0222	1-1	320	M22X2.5
JAG98-0223	1-1	120	M24X2.5
JAG98-0224	1-1	140	M24X2.5
JAG98-0225	1-1	150	M24X2.5
JAG98-0226	1-1	165	M24X2.5
JAG98-0227	1-1	180	M24X2.5
JAG98-0228	1-1	200	M24X2.5
JAG98-0229	1-1	245	M24X2.5
JAG98-0230	1-1	280	M24X2.5
JAG98-0231	1-1	300	M24X2.5
JAG98-0232	1-1	320	M24X2.5
JAG98-0233	1-1	370	M24X2.5
JAG98-0234	1-1	400	M24X2.5
JAG98-0235	1-1	120	M24X3
JAG98-0236	1-1	140	M24X3
JAG98-0237	1-1	150	M24X3
JAG98-0238	1-1	165	M24X3
JAG98-0239	1-1	180	M24X3
JAG98-0240	1-1	200	M24X3
JAG98-0241	1-1	230	M24X3
JAG98-0242	1-1	250	M24X3
JAG98-0243	1-1	270	M24X3
JAG98-0244	1-1	300	M24X3
JAG98-0245	1-1	330	M24X3

Łączniki górne

NUMER	KAT	L1	D
JAG98-0246	1-1	370	M24X3
JAG98-0247	1-1	400	M24X3
JAG98-0248	1-1	180	M27X3
JAG98-0249	2-2	180	M27X3
JAG98-0250	1-1	220	M27X3
JAG98-0251	2-2	220	M27X3
JAG98-0252	1-1	275	M27X3
JAG98-0253	2-2	275	M27X3
JAG98-0254	1-1	320	M27X3
JAG98-0255	1-2	320	M27X3
JAG98-0256	2-2	320	M27X3
JAG98-0257	1-1	350	M27X3
JAG98-0258	1-2	350	M27X3
JAG98-0259	2-2	350	M27X3
JAG98-0003	1-1	370	M27X3
JAG98-0004	2-2	370	M27X3
JAG98-0260	1-1	380	M27X3
JAG98-0261	1-2	380	M27X3
JAG98-0262	2-2	380	M27X3
JAG98-0263	1-1	400	M27X3
JAG98-0264	1-2	400	M27X3
JAG98-0265	2-2	400	M27X3
JAG98-0266	1-1	430	M27X3
JAG98-0267	1-2	430	M27X3
JAG98-0268	2-2	430	M27X3
JAG98-0005	1-1	450	M27X3
JAG98-0269	1-2	450	M27X3
JAG98-0006	2-2	450	M27X3
JAG98-0270	1-1	470	M27X3
JAG98-0271	1-2	470	M27X3
JAG98-0272	2-2	470	M27X3
JAG98-0273	1-1	500	M27X3
JAG98-0274	1-2	500	M27X3
JAG98-0275	2-2	500	M27X3
JAG98-0276	1-1	550	M27X3

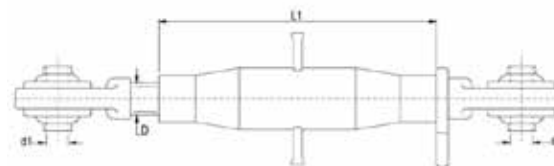
Łączniki górne



NUMER	KAT	L1	D
JAG98-0310	1-2	470	M30X3.5
JAG98-0311	2-2	470	M30X3.5
JAG98-0020	1-1	500	M30X3.5
JAG98-0312	1-2	500	M30X3.5
JAG98-0021	2-2	500	M30X3.5
JAG98-0313	1-1	550	M30X3.5
JAG98-0314	1-2	550	M30X3.5
JAG98-0315	2-2	550	M30X3.5
JAG98-0316	1-1	600	M30X3.5
JAG98-0317	1-2	600	M30X3.5
JAG98-0318	2-2	600	M30X3.5
JAG98-0319	1-1	650	M30X3.5
JAG98-0320	1-2	650	M30X3.5
JAG98-0321	2-2	650	M30X3.5
JAG98-0322	1-1	700	M30X3.5
JAG98-0323	1-2	700	M30X3.5
JAG98-0324	2-2	700	M30X3.5
JAG98-0325	1-1	730	M30X3.5
JAG98-0326	1-2	730	M30X3.5
JAG98-0327	2-2	730	M30X3.5
JAG98-0328	1-1	750	M30X3.5
JAG98-0329	1-2	750	M30X3.5
JAG98-0330	2-2	750	M30X3.5
JAG98-0331	1-1	800	M30X3.5
JAG98-0332	1-2	800	M30X3.5
JAG98-0333	2-2	800	M30X3.5
JAG98-0334	1-1	900	M30X3.5

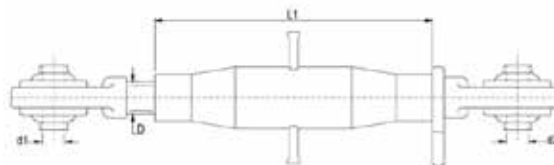
Łączniki górne

NUMER	KAT	L1	D
JAG98-0277	1-2	550	M27X3
JAG98-0279	2-2	550	M27X3
JAG98-0280	2-2	570	M27X3
JAG98-0281	1-1	600	M27X3
JAG98-0282	1-2	600	M27X3
JAG98-0283	2-2	600	M27X3
JAG98-0284	1-1	650	M27X3
JAG98-0285	1-2	650	M27X3
JAG98-0286	2-2	650	M27X3
JAG98-0287	1-1	700	M27X3
JAG98-0288	1-2	700	M27X3
JAG98-0289	2-2	700	M27X3
JAG98-0290	1-2	320	M27X3
JAG98-0291	1-2	400	M27X3
JAG98-0292	1-2	450	M27X3
JAG98-0293	1-2	500	M27X3
JAG98-0294	2-2	320	M27X3
JAG98-0295	2-2	400	M27X3
JAG98-0296	2-2	450	M27X3
JAG98-0007	2-2	180	M30X3.5
JAG98-0008	1-1	230	M30X3.5
JAG98-0009	2-2	230	M30X3.5
JAG98-0010	1-1	270	M30X3.5
JAG98-0011	2-2	270	M30X3.5
JAG98-0012	1-1	330	M30X3.5
JAG98-0013	2-2	330	M30X3.5
JAG98-0014	1-1	370	M30X3.5
JAG98-0015	2-2	370	M30X3.5
JAG98-0016	1-1	400	M30X3.5
JAG98-0017	2-2	400	M30X3.5
JAG98-0018	1-1	450	M30X3.5
JAG98-0019	2-2	450	M30X3.5



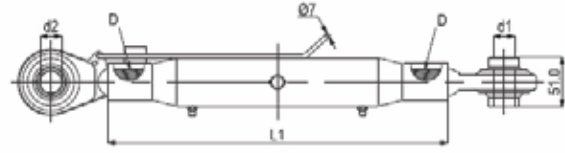
NUMER	KAT	L1	D
JAG98-0335	1-2	900	M30X3.5
JAG98-0336	2-2	900	M30X3.5
JAG98-0337	1-1	1000	M30X3.5
JAG98-0338	1-2	1000	M30X3.5
JAG98-0339	2-2	1000	M30X3.5
JAG98-0340	1-1	370	M30X3
JAG98-0341	1-2	370	M30X3
JAG98-0342	2-2	370	M30X3
JAG98-0343	1-1	400	M30X3
JAG98-0344	1-2	400	M30X3
JAG98-0345	2-2	400	M30X3
JAG98-0346	1-1	450	M30X3
JAG98-0347	1-2	450	M30X3
JAG98-0348	2-2	450	M30X3
JAG98-0349	2-2	460	M30X3
JAG98-0350	1-1	500	M30X3
JAG98-0351	1-2	500	M30X3
JAG98-0352	2-2	500	M30X3
JAG98-0353	2-2	520	M30X3
JAG98-0354	2-2	550	M30X3
JAG98-0355	2-2	560	M30X3
JAG98-0356	2-2	600	M30X3
JAG98-0357	2-2	650	M30X3
JAG98-0358	2-2	720	M30X3
JAG98-0359	2-2	350	M36X3
JAG98-0360	2-2	380	M36X3
JAG98-0361	2-2	400	M36X3

Łączniki górne



NUMER	KAT	L1	D
JAG98-0362	2-2	460	M36X3
JAG98-0363	2-2	520	M36X3
JAG98-0364	2-2	570	M36X3
JAG98-0365	2-2	580	M36X3
JAG98-0366	2-2	600	M36X3
JAG98-0367	2-2	640	M36X3
JAG98-0368	2-2	700	M36X3
JAG98-0369	2-2	800	M36X3
JAG98-0370	2-2	900	M36X3
JAG98-0371	2-2	1000	M36X3
JAG98-0022	2-2	360	M36X3
JAG98-0023	2-2	400	M36X3
JAG98-0024	2-3	400	M36X3
JAG98-0025	3-3	400	M36X3
JAG98-0026	2-2	460	M36X3
JAG98-0372	2-3	460	M36X3
JAG98-0027	3-3	460	M36X3
JAG98-0373	2-2	520	M36X3
JAG98-0374	2-3	520	M36X3
JAG98-0375	3-3	520	M36X3
JAG98-0376	2-2	580	M36X3
JAG98-0377	2-3	580	M36X3
JAG98-0378	3-3	580	M36X3
JAG98-0379	2-2	620	M36X3
JAG98-0380	2-3	620	M36X3
JAG98-0381	3-3	620	M36X3
JAG98-0382	2-2	700	M36X3

Łączniki górne



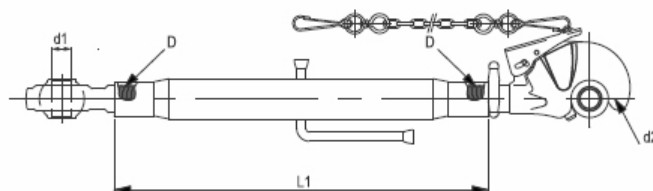
NUMER	KAT	L1	D
JAG98-0400	2-2	360	M30X3.5
JAG98-0401	2-2	400	M30X3.5
JAG98-0402	2-2	460	M30X3.5
JAG98-0403	2-2	520	M30X3.5
JAG98-0404	2-2	580	M30X3.5
JAG98-0405	2-2	640	M30X3.5
JAG98-0406	2-2	700	M30X3.5
JAG98-0407	2-2	800	M30X3.5
JAG98-0408	2-2	360	M42X3
JAG98-0409	2-2	400	M42X3
JAG98-0410	2-2	460	M42X3
JAG98-0411	2-2	520	M42X3
JAG98-0412	2-2	580	M42X3
JAG98-0029	3-3	360	M42X3
JAG98-0413	3-3	400	M42X3
JAG98-0414	3-3	460	M42X3
JAG98-0415	3-3	520	M42X3
JAG98-0030	3-3	580	M42X3



NUMER	A	B	D1	D2	H1	H2
42/37-045/1.01	350	M24X3	25.4	25.4	51	51
46/65-044/0.01	400	M24X2	25.4	25.4	51	44
JAG98-0521	430	M24X2	25.4	19.0	51	44
3027824M91.01	430	M24X2	25.4	25.4	44	44
86450999.01	470	M30X3.5	25.4	25.4	51	51
JAG98-0522	470	M36X3	25.4	25.4	51	51
89450999.01	470	M36X3	32	25.4	51	51

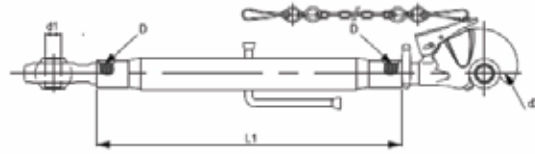
Wyżej wymienione części zamienne nie są częściami oryginalnymi. Originalne numery podano jedynie w celach porównawczych. Kopiowanie całości lub fragmentów katalogu bez pisemnej zgody zabronione. Zastrzegamy sobie prawo do ewentualnych błędów.

Łączniki górne

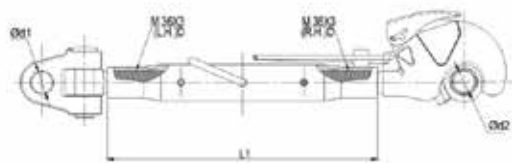


NUMER	KAT	L1	D
JAG98-0450	2-2	220	M27X3
JAG98-0438	1-2	220	M27X3
JAG98-0439	2-2	320	M27X3
JAG98-0440	2-2	370	M27X3
JAG98-0441	2-2	430	M27X3
JAG98-0442	2-2	470	M27X3
JAG98-0443	2-2	570	M27X3
JAG98-0444	2-2	360	M30X3
JAG98-0445	2-2	400	M30X3
JAG98-0446	2-2	450	M30X3
JAG98-0447	2-2	500	M30X3
JAG98-0448	2-2	550	M30X3
JAG98-0449	2-2	600	M30X3
JAG98-0451	2-2	730	M30X3
JAG98-0452	2-2	800	M30X3
JAG98-0453	2-2	900	M30X3
JAG98-0454	2-2	1000	M30X3
JAG98-0455	2-2	360	M36X3
JAG98-0456	2-2	400	M36X3
JAG98-0457	2-3	400	M36X3
JAG98-0458	3-2	400	M36X3
JAG98-0459	3-3	400	M36X3
JAG98-0460	2-2	450	M36X3
JAG98-0461	2-3	450	M36X3
JAG98-0462	3-2	450	M36X3

Łączniki górne



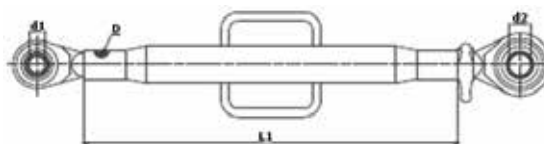
NUMER	KAT	L1	D
JAG98-0463	3-3	450	M36X3
JAG98-0464	2-2	460	M36X3
JAG98-0465	2-3	460	M36X3
JAG98-0466	3-2	460	M36X3
JAG98-0467	3-3	460	M36X3
JAG98-0468	2-2	500	M36X3
JAG98-0469	2-3	500	M36X3
JAG98-0470	3-2	500	M36X3
JAG98-0471	3-3	500	M36X3
JAG98-0472	2-2	580	M36X3
JAG98-0473	2-3	580	M36X3
JAG98-0474	3-2	580	M36X3
JAG98-0475	3-3	580	M36X3
JAG98-0476	2-2	620	M36X3
JAG98-0477	2-3	620	M36X3
JAG98-0478	3-2	620	M36X3
JAG98-0479	3-3	620	M36X3
JAG98-0480	2-2	700	M36X3
JAG98-0481	2-3	700	M36X3
JAG98-0482	3-2	700	M36X3
JAG98-0483	3-3	700	M36X3
JAG98-0484	2-2	730	M36X3
JAG98-0485	2-3	730	M36X3
JAG98-0486	3-2	730	M36X3
JAG98-0487	3-3	730	M36X3



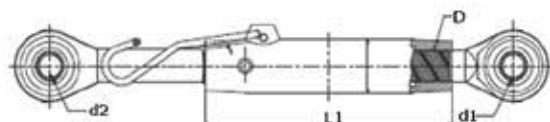
NUMER	KAT	L1	D
JAG98-0031	2-3	400	M 36X3
JAG98-0032	3-2	400	M 36X3

Wyżej wymienione części zamienne nie są częściami oryginalnymi. Oryginalne numery podano jedynie w celach porównawczych. Kopiowanie całości lub fragmentów katalogu bez pisemnej zgody zabronione. Zastrzegamy sobie prawo do ewentualnych błędów.

Łączniki górne



NUMER	KAT	L1	D
227110.01	2-2	480	1.14" UNC



NUMER	KAT	L1	D
JAG98-0531	2-2	280	M36X3
JAG98-0532	2-2	280	M36X4

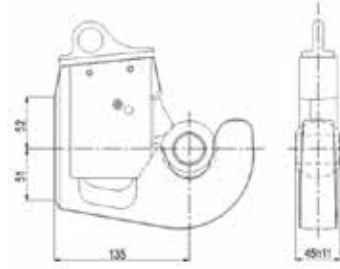


NUMER	KAT	L1	D
JAG98-0033	2-2	300	1.1/4"UNC
JAG98-0034	2-2	280	M36X4
JAG98-0035	2-3	280	M36X4
JAG98-0036	3-3	280	M36X4
JAG98-0037	3-3	330	M36X4



NUMER	KAT	L1	D
JAG98-0038	1-2	476	11/16"UNF
JAG98-0039	22	546	11/16"UNF
JAG98-0040	2-2	210	M 36X3
JAG98-0541	2-2	245	M 36X3

Haki łącznika górnego



Szybkozłącze
łącznika dolnego kat. 1

NUMER	KATEGORIA
JAG98-0045	1
JAG98-0046	2
JAG98-0047	3



Zestaw naprawczy
haka łącznika górnego

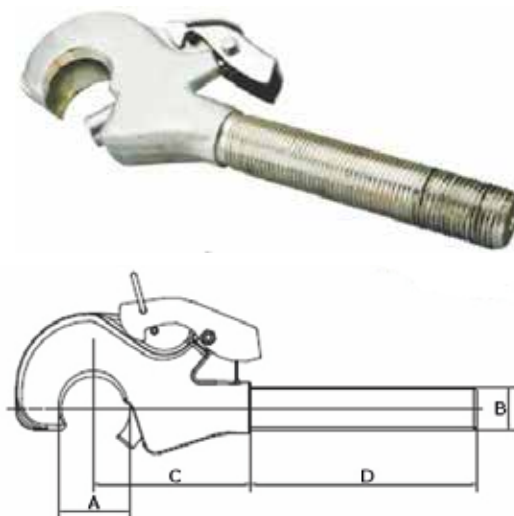
NUMER
JAG98-0560
JAG98-0561



Hak do belki polowej

NUMER
JAG98-0063

Haki łącznika górnego



NUMER	A	B	C	D
JAG98-0550	50	M27X3	105	180
JAG98-0551	50	M30X3	105	180
JAG98-0552	50	M36X3	105	180
JAG98-0553	60	M30X3	120	180
JAG98-0554	60	M36X3	120	180
JAG98-0555	50	M27X3	105	180
JAG98-0556	50	M30X3	105	180
JAG98-0557	50	M36X3	105	180
JAG98-0558	60	M30X3	120	180
JAG98-0559	60	M36X3	120	180



Łańcuchy

NUMER

JAG98-0562

JAG98-0563



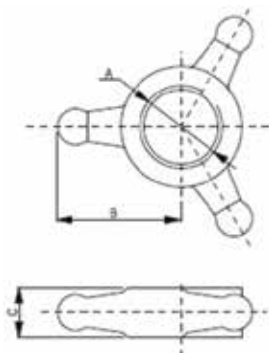
Sprężyny
dystansowe

NUMER

JAG98-0564

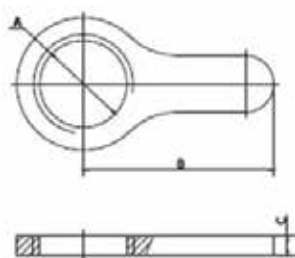
JAG98-0565

JAG98-0566



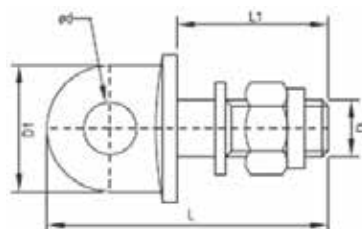
Nakrętki
zabezpieczające

NUMER	A	B	C
JAG98-0635	M27X3	45	18
JAG98-0636	M30X3	45	18
JAG98-0637	M30X3.5	45	18
JAG98-0638	M36X3	50	15
JAG98-0639	M40X3	50	15
JAG98-0640	M42X3	50	15

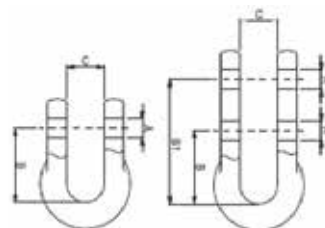


Nakrętki zabezpieczające

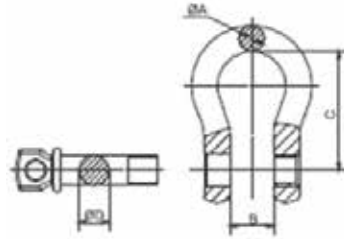
NUMER	A	B
JAG98-0641	M22X2.5	60
JAG98-0642	M24X2.5	60
JAG98-0643	M24X3	60
JAG98-0644	M27X3	60
JAG98-0645	M30X3	60
JAG98-0646	M30X3.5	60
JAG98-0647	M36X3	88
JAG98-0648	M40X3	88



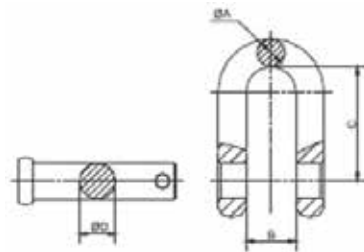
NUMER	D	L	d	D1	L1
JAG98-0055	M16X1.5	80	15	36	43
JAG98-0056	M18X1.5	80	15	36	43
JAG98-0057	M20X2.5	100	18	40	60
JAG98-0058	M20X2.5	125	20	53	65
JAG98-0059	M24X2	125	24	53	65



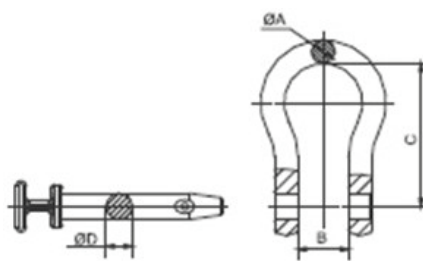
NUMER	A	B	B1	C
JAG98-0060	12	38	-	18
JAG98-0061	14	38	-	18
JAG98-0062	16	51	-	20
JAG98-0840	18	51	-	20
JAG98-0841	14/14	50	72	18



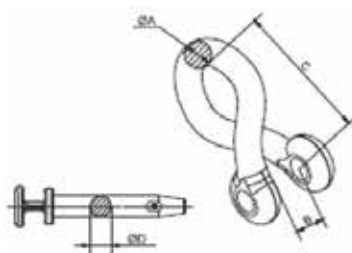
NUMER	A	B	C
JAG98-0845	3/8"	23/32"	1-7/16"
JAG98-0846	7/16"	3/4"	1-11/16"
JAG98-0847	1/2"	13/16"	1-15/16"
JAG98-0848	3/4"	1-1/4"	3"



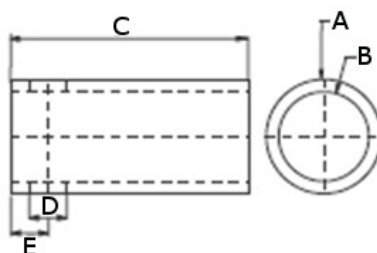
NUMER	A	B	C	D
JAG98-0849	3/8"	21/32"	1-1/4"	7/16"



NUMER	A	B	C	D
JAG98-0850	3/4"	1-5/16"	3-3/4"	5/8"
JAG98-0851	7/8"	1-5/16"	3-1/4"	3/4"
JAG98-0852	7/8"	1-5/16"	4-1/4"	1"
JAG98-0853	1"	2-1/8"	5-5/16"	



NUMER	A	B	C	D
JAG98-0854	3/4"	1-5/16"	3-1/2"	5/8"
JAG98-0855	7/8"	1-5/16"	3"	3/4"
JAG98-0856	7/8"	1-5/16"	3-7/8"	3/4"
JAG98-0857	1"	2-1/8"	5"	1"



Tulejki
redukcyjne

NUMER	A	B	C	D
JAG98-1489	28.4	22.2	63	12
JAG98-1490	28.4	22.2	63	12
JAG98-1491	36.5	28.6	63	17

Zestawy regeneracyjne



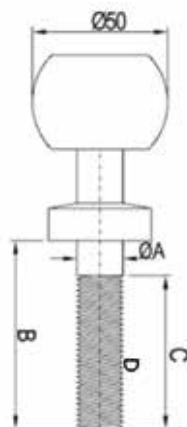
Zestaw naprawczy
Opti Lock

NUMER
JAG98-0050
JAG98-0051
JAG98-0052



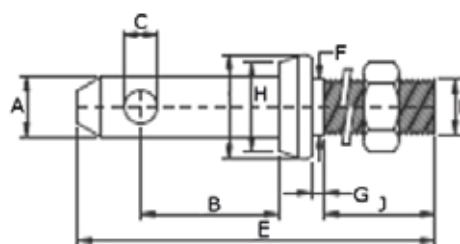
Zestaw naprawczy
łącznika dolnego

ZAWARTOŚĆ
2 HAKI
2 KULE
2 KULE Z KOŁNIERZEM
ŁAŃCUCH
SPRĘŻYNA
4 PIERŚCIEŃ DYSTANSOWE
2 HAKI
2 KULE
2 KULE Z KOŁNIERZEM
ŁAŃCUCH
SPRĘŻYNA
4 PIERŚCIEŃ DYSTANSOWE



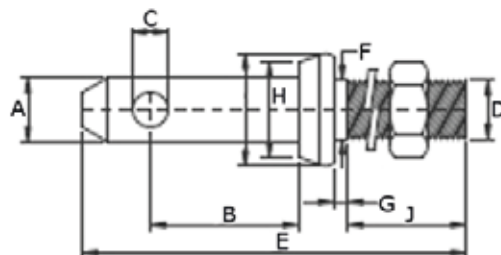
Sworznie kulowe

NUMER	A	B
JAG98-0567	22.0	189
JAG98-0568	19	70
JAG98-0053	22	70
JAG98-0054	25.4	70



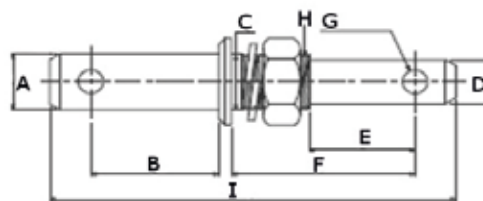
NUMER	A	B	C	D	E	F	G	H	I	J
JAG98-1092	28.6	60	12	3/4"UNF	149	19	6	38	44	54
JAG98-1093	28.6	60	12	7/8"UNF	136.5	22	12.7	38	44	35
JAG98-1094	28.6	60	12	7/8"UNF	146	22	12.7	38	44	44
JAG98-1095	28.6	60	12	7/8"UNF	149	28.6	22	38	44	38
JAG98-1096	28.6	60	12	1"UNF	149	25.4	9.5	38	44	51
JAG98-1097	28.6	57	12	9/8"UNF	159	28.6	16	38	44	60
JAG98-1098	28.6	60	12	9/8"UNF	149	28.6	9.5	38	44	51
JAG98-1099	36	54	12	9/8"UNF	149	28.6	16	46	52	48
JAG98-1100	36.5	61	12	M27X1.5	165	27	29	46	52	60

Sworznie i zawleccki

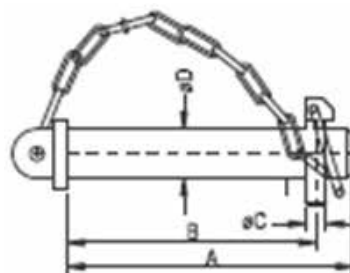


NUMER	A	B	C	D	E	F	G	H	I	J
JAG98-1068	22	46	12	M18X1.5	133	18	5	31	37	45
JAG98-1069	22	46	12	M20X1.5	130	20	5	30	36	46
JAG98-1070	22	51	12	M20X1.5	128	20	10	30	36	38
JAG98-1071	22	51	12	M20X1.5	130	20	5	30	36	40
JAG98-0142	22	51	12	M22X1.5	140	22	14	30	38	40
JAG98-1072	22	51	12	3/4"UNF	140	19	6	30	36	48
JAG98-1073	22	51	12	5/8"UNF	140	22	11	30	36	43
JAG98-1074	22	51	12	7/8"UNF	138	28.6	14	30	36	38
JAG98-1075	22	51	12	7/8"UNF	140	22	5	30	36	46
JAG98-1076	22	51	12	7/8"UNF	146	28.6	22	30	36	38
JAG98-1077	22	51	12	7/8"UNF	149	22	11	30	36	54
JAG98-1078	22	51	12	1"UNF	146	25.4	9.5	30	36	51
JAG98-1079	22	60	12	M22X1.5	146	22	16	38	44	40
JAG98-1080	22	60	12	M22X1.5	146	24	16	38	44	40
JAG98-1081	22	60	12	M22X1.5	146	25	16	38	44	40
JAG98-1082	22	60	12	M22X1.5	146	28	16	38	44	40
JAG98-1083	25	60	12	M22X1.5	146	22	16	38	44	40
JAG98-1084	25	60	12	M22X1.5	146	25	16	38	44	40
JAG98-1085	25	60	12	M22X1.5	146	28	16	38	44	40
JAG98-1086	28	55	12	M24X1.5	150	24	15	38	44	45
JAG98-1087	28	55	12	M27X1.5	150	28	14	38	44	45
JAG98-0145	28	58	12	M27X1.5	147	27	10	38	44	48
JAG98-1088	28	60	12	M27X1.5	140	28	15	38	44	35
JAG98-0143	28	60	12	M22X1.5	146	22	16	38	44	40
JAG98-1089	28	60	12	M22X1.5	146	24	16	38	44	40
JAG98-1090	28	60	12	M22X1.5	146	25	16	38	44	40
JAG98-0144	28	60	12	M22X1.5	146	28	16	38	44	40
JAG98-1091	28.6	51	12	3/4"UNF	149	25.4	24	38	44	36.5

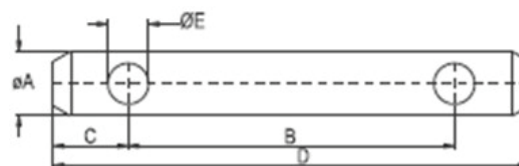
Sworznie i zawlecзки



NUMER	A	B	C	D	E	F	G	H	I
JAG98-1101	28	62	25	22	52	92	12	M24X1.5	190
JAG98-1102	28	58	25	22	48	90	12	M24X2	195
JAG98-1103	28	58	28	22	48	90	12	M27X3	195
JAG98-1104	28	60	25	22	51	98	12	3"UNF	203
JAG98-1105	28.6	62	25.4	22	52	84	12	1"UNF	190.5
JAG98-1106	28.6	62	28	22	51	89	12	9/8"UNC	197

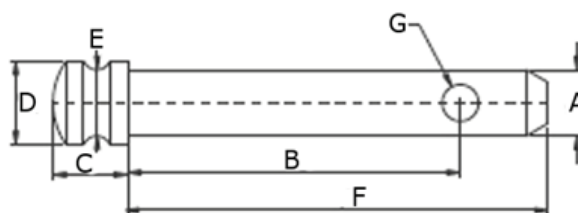


NUMER	A	B	C	D
JAG98-1107	92	77	6	19
JAG98-1108	120	108	8	19
JAG98-1109	120	98	8	25



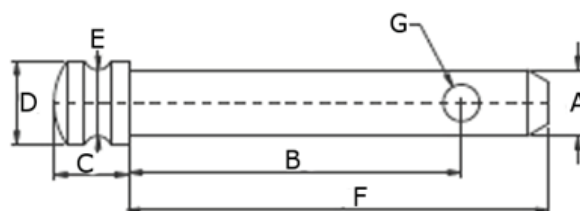
NUMER	A	B	C	D	E
JAG98-1110	19	96	22	140	12
JAG98-1111	19	126	22	170	12
JAG98-1112	19	163	22	207	12
JAG98-1113	19	210	22	254	12
JAG98-1114	25	100	22	144	12
JAG98-1115	25	120	22	164	12
JAG98-1116	25	164	22	210	12
JAG98-1117	25	250	22	294	12

Sworznie i zawlecзки



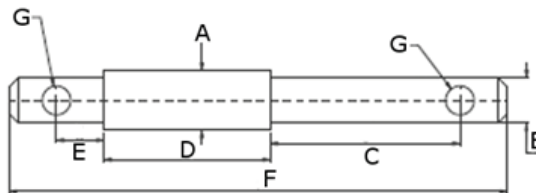
NUMER	A	B	C	D	E	F	G
JAG98-1142	19	110	17	25	18	125	12
JAG98-1143	19	120	17	25	18	135	12
JAG98-1144	19	125	17	25	18	140	12
JAG98-1145	19	145	17	25	18	160	12
JAG98-1146	19	165	17	25	18	160	12
JAG98-1147	22	55	17	28	21	70	12
JAG98-1149	22	76	17	28	21	91	12
JAG98-1150	22	85	17	28	21	100	12
JAG98-1151	22	95	17	28	21	110	12
JAG98-1152	22	100	17	28	21	115	12
JAG98-1153	22	106	17	28	21	121	12
JAG98-1154	22	110	17	28	21	125	12
JAG98-1155	22	125	17	28	21	140	12
JAG98-1156	22	145	17	28	21	160	12
JAG98-1157	22	155	17	28	21	170	12
JAG98-1158	22	165	17	28	21	180	12
JAG98-1159	22	185	17	28	21	200	12
JAG98-1160	22	205	17	28	21	220	12
JAG98-0149	25	76	20	31	24	91	12
JAG98-1161	25	85	20	31	24	100	12
JAG98-1162	25	95	20	31	24	110	12
JAG98-1163	25	105	20	31	24	120	12
JAG98-0150	25	110	20	31	24	125	12
JAG98-1164	25	116	20	31	24	131	12
JAG98-1165	25	126	20	31	24	141	12

NUMER	A	B	C	D	E	F	G
JAG98-0147	19	92	17	25	18	107	12
JAG98-0148	19	103	17	25	18	118	118

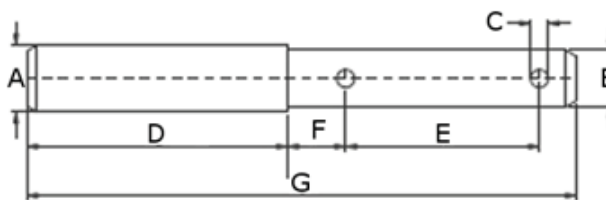


NUMER	A	B	C	D	E	F	G
JAG98-1166	25	136	20	31	24	151	12
JAG98-0151	25	145	20	31	24	160	12
JAG98-1167	25	160	20	31	24	175	12
JAG98-1168	25	180	20	31	24	195	12
JAG98-1169	25	185	20	31	24	200	12
JAG98-1170	25	205	20	31	24	220	12
JAG98-1171	28	85	20	34	27	100	12
JAG98-1172	28	95	20	34	27	110	12
JAG98-1173	28	103	20	34	27	118	12
JAG98-1174	28	116	20	34	27	131	12
JAG98-1175	28	125	20	34	27	140	12
JAG98-1176	28	130	20	34	27	145	12
JAG98-1177	28	145	20	34	27	160	12
JAG98-1178	28	152	20	34	27	167	12
JAG98-1179	28	160	20	34	27	175	12
JAG98-1180	28	180	20	34	27	195	12
JAG98-1181	28	205	20	34	27	220	12
JAG98-1182	30	150	21	36	32	168	12
JAG98-1183	32	105	20	38	32	152	12
JAG98-0152	32	125	20	38	32	163	12
JAG98-1184	32	136	20	38	32	175	12
JAG98-1129	32	150	21	38	32	168	12
JAG98-1133	32	176	19	38	31	194	12
JAG98-1148	36	105	22	42	35	125	12

Sworznie i zawleccki

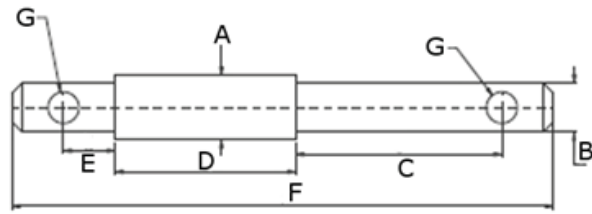


NUMER	A	B	C	D	E
JAG98-0153	25	19	62	96	22
JAG98-0154	25	19	70	66	18
JAG98-1187	25	19	80	70	20
JAG98-1188	28	22	75	75	20
JAG98-1189	28	22	80	70	20
JAG98-1190	28	22	80	90	20
JAG98-0155	32	25	81	115	26
JAG98-1191	36.5	28	80	150	28
JAG98-1192	36.5	28	81	150	26

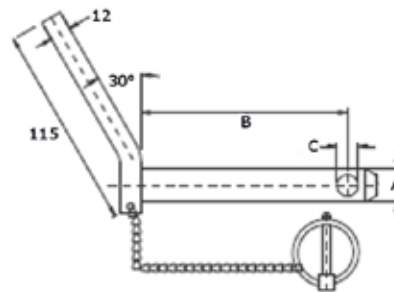


NUMER	A	B	C	D	E
JAG98-1197	19	16	5	74	55
JAG98-1198	22	16	5	80	68
JAG98-1199	25	19	5	80	62
JAG98-1200	25	19	5	69	64
JAG98-1201	25	19	5	90	57
JAG98-1202	28	22	5	90	57
JAG98-1203	28	22	6	90	50
JAG98-0156	32	25	6.5	80	55

Sworznie i zawlecзки

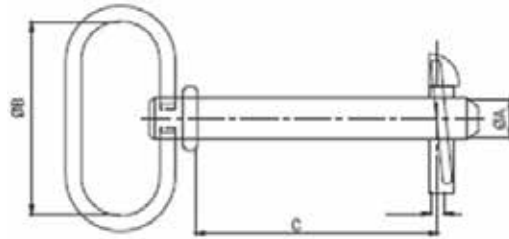


NUMER	A	B	C	D	E	F	G
JAG98-1193	28	22	12	76.5	104.5	88	60
JAG98-1194	28	22	12	85	105	85	62
JAG98-1195	28	22	12	103	78	60	87.3
JAG98-1196	34	28	12	61	80	62	43.8

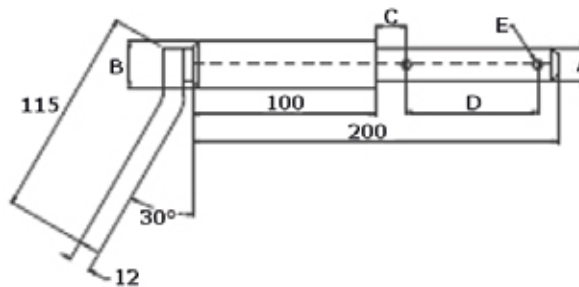


NUMER	A	B	C
JAG98-1285	19	125	12
JAG98-0157	19	135	12
JAG98-0158	19	175	12
JAG98-1286	22	125	12
JAG98-0159	22	135	12
JAG98-1287	22	175	12
JAG98-0160	25	125	12
JAG98-0161	25	135	12
JAG98-0162	25	175	12
JAG98-0163	28	135	12
JAG98-0164	28	175	12
JAG98-1288	28	125	12
JAG98-0165	32	135	12
JAG98-0166	32	175	12
JAG98-0167	37	135	12
JAG98-0168	37	175	12

Sworznie i zawlecзки



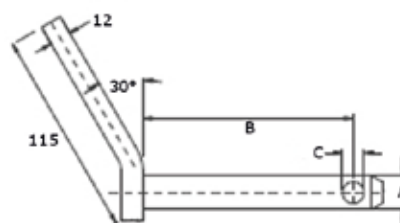
NUMER	A	B	C
JAG98-1204	12.7	92.5	6.5
JAG98-1205	12.7	111	6.5
JAG98-1206	12.7	162	6.5
JAG98-1207	15.9	165	6.5
JAG98-1208	19	103	6.5
JAG98-1209	19	112	6.5
JAG98-1210	19	165	6.5
JAG98-1211	22	112	6.5
JAG98-1212	22	125	6.5
JAG98-1213	22	165	6.5
JAG98-1214	25	110	6.5
JAG98-1215	25	165	6.5
JAG98-1216	25	176	6.5
JAG98-1217	25	189	6.5
JAG98-1218	28	120	6.5
JAG98-1219	28	165	6.5
JAG98-1220	28	189	6.5
JAG98-1221	30	165	12
JAG98-1222	30	183	12
JAG98-1223	31.75	165	12
JAG98-1224	35	190	12



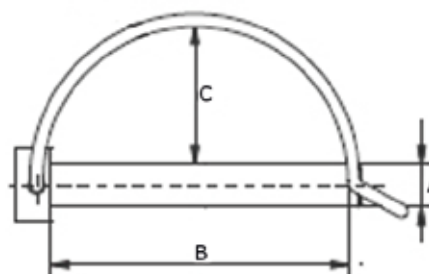
NUMER	A	B	C	D	E
JAG98-1305	19	25	17	72	5
JAG98-0169	22	28	17	72	5

Wyżej wymienione części zamienne nie są częściami oryginalnymi. Originalne numery podano jedynie w celach porównawczych. Kopiowanie całości lub fragmentów katalogu bez pisemnej zgody zabronione. Zastrzegamy sobie prawo do ewentualnych błędów.

Sworznie i zawlecзки

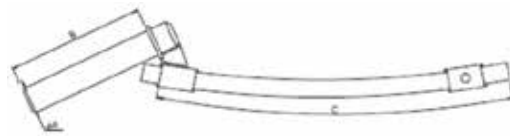


NUMER	A	B	C
JAG98-1289	19	125	12
JAG98-1290	19	135	12
JAG98-1291	19	175	12
JAG98-1292	22	125	12
JAG98-1293	22	135	12
JAG98-1294	22	175	12
JAG98-1295	25	125	12
JAG98-1296	25	135	12
JAG98-1297	25	175	12
JAG98-1298	28	135	12
JAG98-1299	28	175	12
JAG98-1300	28	125	12
JAG98-1301	32	135	12
JAG98-1302	32	175	12
JAG98-1303	37	135	12
JAG98-1304	37	175	12

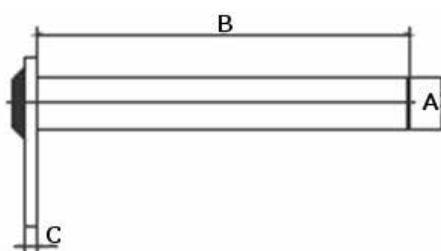
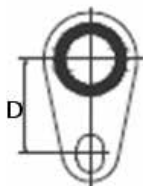


NUMER	A	B	C	D
JAG98-0126	8	40	18	3
JAG98-0127	8	60	28	3
JAG98-0128	10	60	28	3

Sworznie i zawleccki



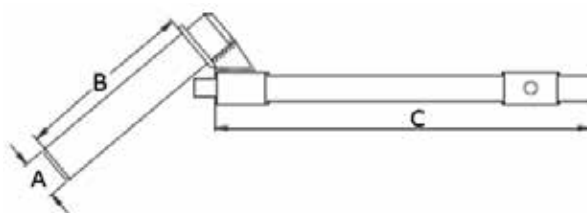
NUMER	A	B	C
JAG98-1324	31	150	330
JAG98-1325	31	150	350
JAG98-0170	31	150	480
JAG98-1326	31	150	560
JAG98-1327	31	150	630
JAG98-1328	31	150	790
JAG98-1329	33	150	330
JAG98-1330	33	150	480
JAG98-1331	33	150	560



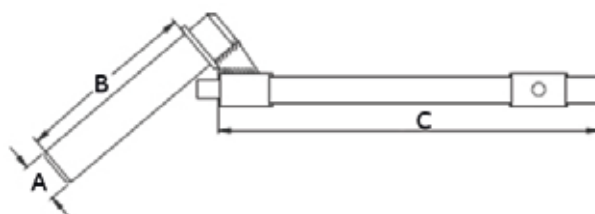
NUMER	A	B	C	D
JAG98-1314	20	70	5	30
JAG98-1315	25	74	5	30
JAG98-1316	25	88	5	30
JAG98-1317	25	95	5	67
JAG98-1318	25	125	5	40
JAG98-1319	30	74	5	30
JAG98-1320	35	175	5	30

Wyżej wymienione części zamienne nie są częściami oryginalnymi. Oryginalne numery podano jedynie w celach porównawczych. Kopiowanie całości lub fragmentów katalogu bez pisemnej zgody zabronione. Zastrzegamy sobie prawo do ewentualnych błędów.

Sworznie i zawlecзки



NUMER	A	B	C
JAG98-0171	31	150	250
JAG98-0172	31	150	330
JAG98-0173	31	150	350
JAG98-0174	31	150	480
JAG98-0175	31	150	500
JAG98-0176	31	150	630
JAG98-1332	33	150	250
JAG98-1333	33	150	330
JAG98-1334	33	150	480



NUMER	A	B	C
JAG98-0177	31	145	250
JAG98-0178	31	145	350
JAG98-0179	31	145	500
JAG98-0180	31	145	630

Sworznie i zawlecзки



NUMER

42/37-019/0.01



NUMER

46/55-107/0.01



NUMER

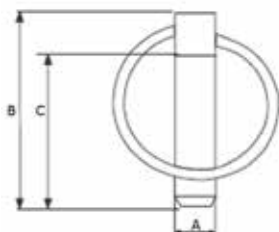
46/65-027/1.01



NUMER

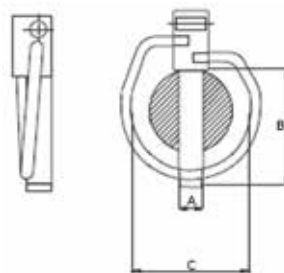
80/45-905/0.01

Sworznie i zawlecзки



Zawlecзки

NUMER	A	B	C
JAG98-1344	4.5	28.6	35
JAG98-0118	4.5	33	40
JAG98-0119	6	36.5	45
JAG98-1345	6	60	70
JAG98-1346	7	36.5	45
JAG98-0120	8	36.5	45
JAG98-1347	8	60	70
JAG98-0121	9	36.5	45
JAG98-0122	10	36.5	45
JAG98-1348	10	42	51
JAG98-1349	10	36.5	45
JAG98-1350	11	39	51
JAG98-0123	12	36.5	45



NUMER	A	B
JAG98-1353	4.5	32
JAG98-1354	5.5	42
JAG98-1355	7.5	42
JAG98-1356	9.5	45
JAG98-1357	11	45
JAG98-0124	11	55
JAG98-0125	16	60

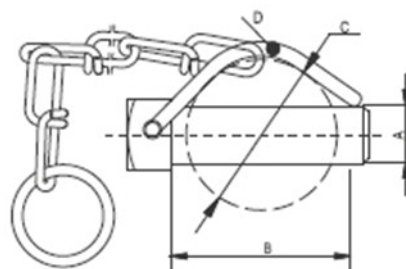
Sworznie i zawlecзки



NUMER

JAG98-1358

JAG98-1359



NUMER	A	B	C	D
JAG98-1373	12	48	44	4
JAG98-1374	14	48	44	4
JAG98-1375	16	50	44	4
JAG98-1376	19	60	48	4



NUMER

42/37-038/0.01

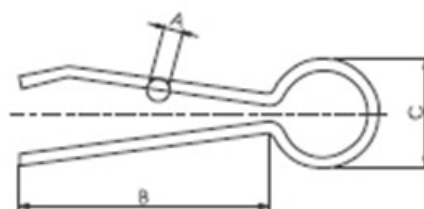
Sworznie i zawlecзки

Sworznie i zawlecзки



NUMER

42/39-007/0.01



NUMER

A

B

C

JAG98-1413

3X1.5

38

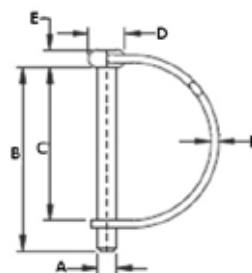
17

JAG98-1414

5X2.5

56

27



A

B

C

D

E

F

6

60

50

12

6

2.3

6

67

57

12

6

2.3

8

45

38

15

7

2.3

8

70

60

15

7

2.3

9.5

67

57

16

7.5

2.3

10

45

38

15

7

2.3

10

70

60

15

8.50

2.3

11

99

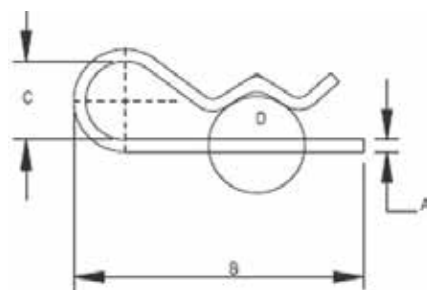
89

19

10

2.3

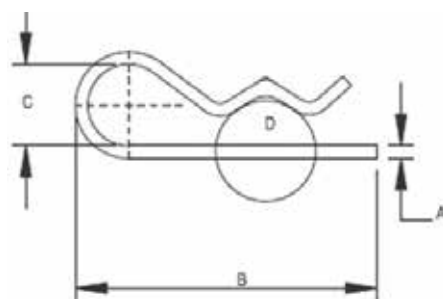
Sworznie i zawleccki



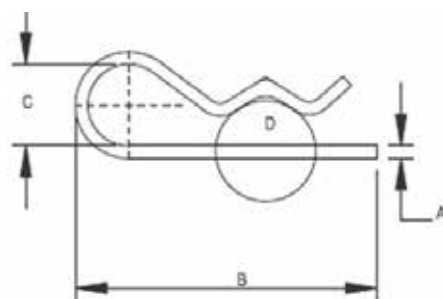
NUMER	A	B	C	D
JAG98-1379	2	44	11	10-12
JAG98-1380	2	51	10	10-12
JAG98-1381	2	59	13	10-12
JAG98-1382	2.5	46	10	11-13
JAG98-1383	2.5	62	14	11-13
JAG98-0129	3	52	13	12-16
JAG98-1384	3	65	13	12-16
JAG98-0130	3	70	13	12-16
JAG98-1385	3.5	71	18	16-30
JAG98-1386	3.5	84	18	16-30
JAG98-0131	4	76	18	16-30
JAG98-0132	4	88	18	16-30
JAG98-1387	4	108	26	14-30
JAG98-1388	4.5	93	20	16-30
JAG98-0133	5	100	24	25-35
JAG98-1389	5	106	24	25-35
JAG98-0134	5	116	24	20-35
JAG98-0135	6	103	30	28-45
JAG98-1390	6	114	30	28-45
JAG98-1391	6	120	30	28-45
JAG98-0136	6	130	36	28-45
JAG98-1392	7	115	25	25-38
JAG98-1393	7	163	30	30-45
JAG98-1394	8	105	52	40-45
JAG98-0137	8	156	40	30-45
JAG98-1395	8	187	40	45-60
JAG98-1396	9	162	40	45-60
JAG98-1397	10	162	40	45-60

Wyżej wymienione części zamienne nie są częściami oryginalnymi. Oryginalne numery podano jedynie w celach porównawczych. Kopiowanie całości lub fragmentów katalogu bez pisemnej zgody zabronione. Zastrzegamy sobie prawo do ewentualnych błędów.

Sworznie i zawlecзки

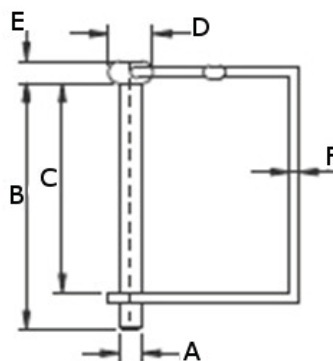


NUMER	A	B	C	D
JAG98-1398	2	65	9	10-12
JAG98-1399	3	71	15	12-16
JAG98-1400	4	77	18	16-30
JAG98-0138	4	93	22	17-24
JAG98-0139	5	108	24	17-28
JAG98-1401	5	116	22	17-28
JAG98-1402	5	200	22	25-32
JAG98-0140	6	120	30	28-42
JAG98-1403	6	143	30	28-42
JAG98-1404	7	162	30	30-45
JAG98-1405	8	155	30	45-60
JAG98-1406	8	162	45	45-60

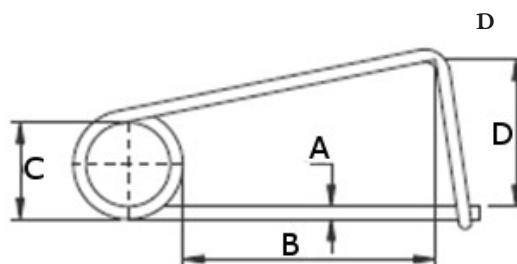


NUMER	A	B	C	D
JAG98-1407	2.25	54	20	9-11
JAG98-1408	2.80	61	20	11-14
JAG98-0141	3.60	78	20	14-20
JAG98-1409	4.50	97	25	20-26
JAG98-1410	5.60	115	25	26-34
JAG98-1411	6.30	146	30	35-45
JAG98-1412	7.00	169	30	45-56

Sworznie i zawlecзки

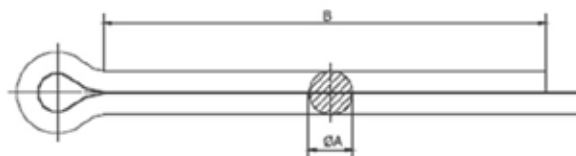


NUMER	A	B	C	D	E	F
JAG98-1423	4.5	46	38	10	5	2.3
JAG98-1424	6	67	57	12	6	2.3
JAG98-1425	8	70	63	15	7	2.3
JAG98-1426	10	90	80	18	8	2.3
JAG98-1427	12	75	67	20	10	2.3



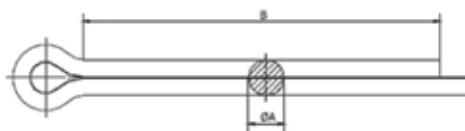
NUMER	A	B	C
JAG98-1428	3	60	20
JAG98-1429	4	100	33
JAG98-1430	5	90	31
JAG98-1431	6	100	30

Główki łącznika centralnego



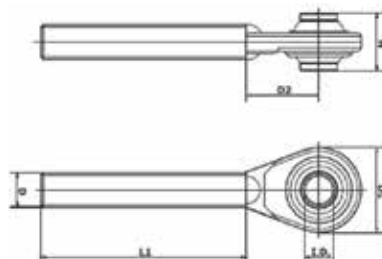
NUMER	A	B
JAG98-1432	1.6	20
JAG98-1433	2.0	20
JAG98-1434	2.0	25
JAG98-1435	2.0	28
JAG98-1436	2.0	32
JAG98-1437	2.0	40
JAG98-1438	2.5	20
JAG98-1439	2.5	25
JAG98-1440	2.5	32
JAG98-1441	2.5	40
JAG98-1442	3.2	20
JAG98-1443	3.2	25
JAG98-1444	3.2	32
JAG98-1445	3.2	35
JAG98-1446	3.2	40
JAG98-1447	3.2	50
JAG98-1448	4.0	25
JAG98-1449	4.0	32
JAG98-1450	4.0	36
JAG98-1451	4.0	40
JAG98-1452	4.0	50
JAG98-1453	4.0	63
JAG98-1454	4.0	70
JAG98-1455	4.0	80
JAG98-1456	5.0	32
JAG98-1457	5.0	40
JAG98-1458	5.0	50
JAG98-1459	5.0	63

Sworznie i zawlecзки



NUMER	A	B
JAG98-1460	5.0	70
JAG98-1461	5.0	80
JAG98-1462	5.0	90
JAG98-1463	6.3	32
JAG98-1464	6.3	40
JAG98-1465	6.3	50
JAG98-1466	6.3	63
JAG98-1467	6.3	70
JAG98-1468	6.3	80
JAG98-1469	6.3	100
JAG98-1470	7.0	50
JAG98-1471	7.0	60
JAG98-1472	7.0	70
JAG98-1473	7.0	80
JAG98-1474	8.0	40
JAG98-1475	8.0	50
JAG98-1476	8.0	63
JAG98-1477	8.0	71
JAG98-1478	8.0	80
JAG98-1479	8.0	90
JAG98-1480	8.0	100
JAG98-1481	8.0	125
JAG98-1482	10.0	50
JAG98-1483	10.0	63
JAG98-1484	10.0	80
JAG98-1485	10.0	100
JAG98-1486	10.0	125
JAG98-1487	13.0	125
JAG98-1488	13.0	140

Główki łącznika centralnego

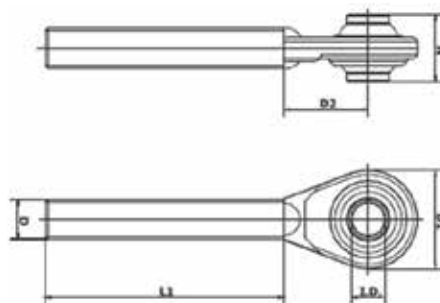


NUMER	KAT.	I.D.	D	L1	D1	D2	H
JAG98-0571	0	16	M20X2.5 R	85	48	40	25.4
JAG98-0572	0	16	M20X2.5 L	85	48	40	25.4
JAG98-0573	1	19	M22X2.5 R	95	58	50	44
JAG98-0574	1	19	M22X2.5 L	95	58	50	44
JAG98-0575	1	19	M22X2.5 R	115	58	50	44
JAG98-0576	1	19	M22X2.5 L	115	58	50	44
JAG98-0577	1	19	M24X2.5 R	115	58	50	44
JAG98-0578	1	19	M24X2.5 L	115	58	50	44
JAG98-0579	1	19	M24X3 R	115	58	50	44
JAG98-0580	1	19	M24X3 L	115	58	50	44
JAG98-0581	1	19	M24X3 R	155	62	50	44
JAG98-0582	1	19	M24X3 L	155	62	50	51
JAG98-0583	2	25.4	M24X3 R	165	75	55	51
JAG98-0584	2	25.4	M24X3 L	165	75	55	44
JAG98-0585	1	19	M27X3 R	150	58	50	44
JAG98-0586	1	19	M27X3 L	150	58	50	51
JAG98-0587	2	25.4	M27X3 R	165	66	50	51
JAG98-0588	2	25.4	M27X3 L	165	66	50	51
JAG98-0589	2	25.4	M27X3 R	165	75	50	51



NUMER	KAT.	I.D.	D	L1	D1
JAG98-0619	2	25.4	M30X3.5 R	170	80
JAG98-0620	2	25.4	M30X3.5 L	170	80
JAG98-0621	3	32	M40X3 R	200	96
JAG98-0622	3	32	M40X3 L	200	96
JAG98-0623	2	25.4	M42X3 R	200	96
JAG98-0624	2	25.4	M42X3 L	200	96
JAG98-0625	3	32	M42X3 R	200	96
JAG98-0626	3	32	M42X3 L	200	96

Główki łącznika centralnego



NUMER	KAT.	I.D.	D	L1	D1	D2
JAG98-0590	2	25.4	M27X3 L	165	75	50
JAG98-0591	1	19	M30X3 R	155	58	50
JAG98-0592	1	19	M30X3 L	155	58	50
JAG98-0593	1	19	M30X3.5 R	155	58	50
JAG98-0594	1	19	M30X3.5 L	155	58	50
JAG98-0595	2	25.4	M30X3 R	165	75	55
JAG98-0596	2	25.4	M30X3 L	165	75	55
JAG98-0597	2	25.4	M30X3.5 R	165	75	55
JAG98-0598	2	25.4	M30X3.5 L	165	75	55
JAG98-0599	2	25.4	M36X3 R	165	80	55
JAG98-0600	2	25.4	M36X3 L	165	80	55
JAG98-0601	2	25.4	M36X3 R	175	80	55
JAG98-0602	2	25.4	M36X3 L	175	80	55
JAG98-0603	2	25.4	M36X3 R	200	96	70
JAG98-0604	2	25.4	M36X3 L	200	96	70
JAG98-0605	3	32	M36X3 R	200	96	70
JAG98-0606	3	32	M36X3 L	200	96	70
JAG98-0607	2	25.4	M40X3 R	170	80	60
JAG98-0608	2	25.4	M40X3 L	170	80	60



NUMER

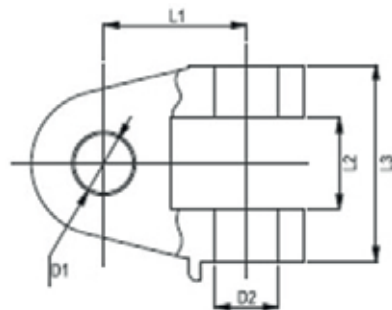
46/65-005/0.01

46/65-006/0.01

86450100.01

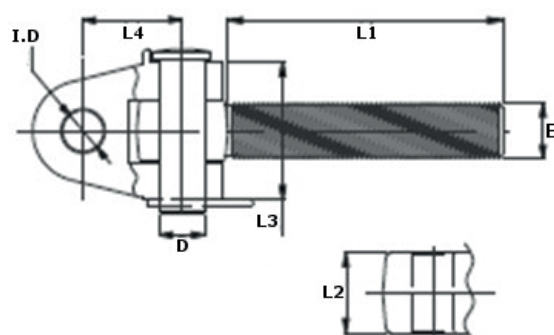
46/65-004/0.01

Widelki



NUMER	D1	D2	L1	L2	L3
JAG98-0724	20.2	28	63	40	
JAG98-0725	25.4	28	63	40	
JAG98-0726	28.4	28	63	40	
JAG98-0727	32	28	63	40	
JAG98-0728	20.2	28	133	40	
JAG98-0729	25.4	28	133	40	
JAG98-0730	28.4	28	133	40	
JAG98-0731	32	28	133	40	
JAG98-0732	28.4	28	57	40	

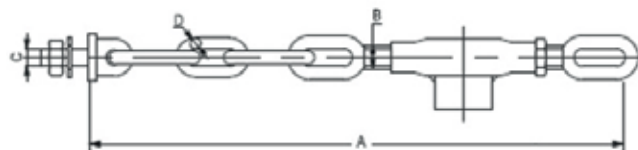
Widelki



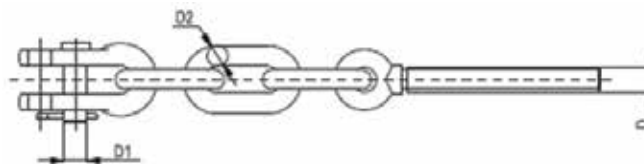
NUMER	KAT.	I.D.	E	L1	L2	L3	L4
JAG98-0733	1	20.2	M30X3.0 RH	185	44	87	63
JAG98-0734	2	25.4	M30X3.0 RH	185	50	87	63
JAG98-0735	2	28.4	M30X3.0 RH	185	50	87	63
JAG98-0736	2	28.4	M30X3.0 RH	185	65	70	57
JAG98-0737	1	20.2	M30X3.0 LH	185	44	87	63
JAG98-0738	2	25.4	M30X3.0 LH	185	50	87	63
JAG98-0739	2	28.4	M30X3.0 LH	185	50	87	63
JAG98-0740	2	28.4	M30X3.0 LH	185	65	70	57
JAG98-0741	1	20.2	M36X3.0 RH	185	44	87	63
JAG98-0742	2	25.4	M36X3.0 RH	185	50	87	63
JAG98-0743	2	28.4	M36X3.0 RH	185	50	87	63
JAG98-0744	3	32	M36X3.0 RH	185	50	87	63
JAG98-0745	2	28.4	M36X3.0 RH	185	65	70	57
JAG98-0746	1	20.2	M36X3.0 LH	185	44	87	63
JAG98-0747	2	25.4	M36X3.0 LH	185	50	87	63
JAG98-0748	2	28.4	M36X3.0 LH	185	50	87	63
JAG98-0749	3	32	M36X3.0 LH	185	50	87	63
JAG98-0750	2	28.4	M36X3.0 LH	185	65	70	57

Wyżej wymienione części zamienne nie są częściami oryginalnymi. Oryginalne numery podano jedynie w celach porównawczych. Kopiowanie całości lub fragmentów katalogu bez pisemnej zgody zabronione. Zastrzegamy sobie prawo do ewentualnych błędów.

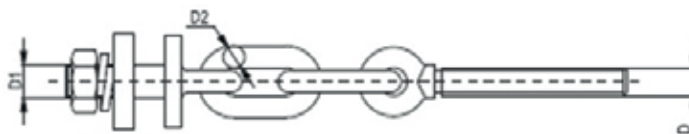
Cięgna stabilizujące



NUMER	A	B	C	D
JAG98-0779	400	M22X2.5	M20X2.5	14
JAG98-0780	480	M22X2.5	M20X2.5	14
JAG98-0781	580	M22X2.5	M20X2.5	14
JAG98-0782	680	M22X2.5	M20X2.5	14
JAG98-0783	400	M24X2.5	M20X2.5	14
JAG98-0784	480	M24X2.5	M20X2.5	14
JAG98-0785	580	M24X2.5	M20X2.5	14
JAG98-0786	680	M24X2.5	M20X2.5	14

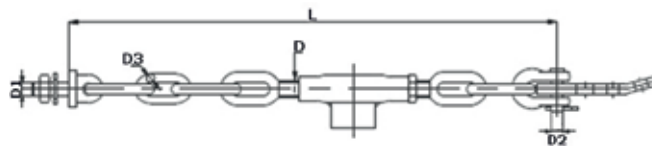


NUMER	D	D1	D2
JAG98-0787	M16X2 RH	12	12
JAG98-0788	M16X2 RH	12	12
JAG98-0789	M16X2 LH	14-D	12
JAG98-0790	M16X2 LH	14-D	14

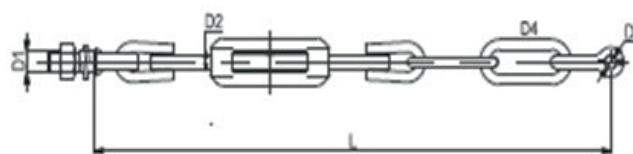


NUMER	D	D1	D2
JAG98-0791	M16X2 RH	M22X1.5	12
JAG98-0792	M16X2 RH	M22X1.5	14
JAG98-0793	M16X2 LH	M18X1.5	12
JAG98-0794	M16X2 RH	M22X1.5	12

Cięgna stabilizujące



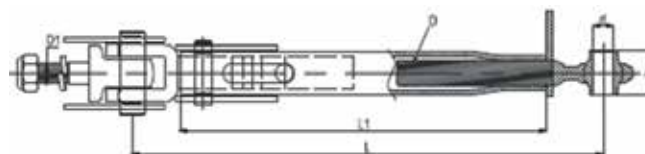
NUMER	L	D	D1	D2
JAG98-0775	620	20X2.5	20X2.5	14
JAG98-0776	570	20X2.5	20X2.5	14



NUMER	L	D2	D3	D4
46/65-039-0.01	550	M16X2	12.5	10
42/37-033-0.01	550	M14X2	12.5.B.SIDE	8



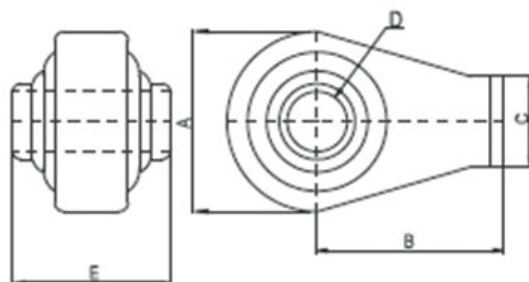
NUMER	d	h	D	D1	L1
JAG98-0822	22.1	35	M24X3	22	465
JAG98-0823	22.1	35	M24X3	22	585
JAG98-0824	28.4	45	M27X3	22	525



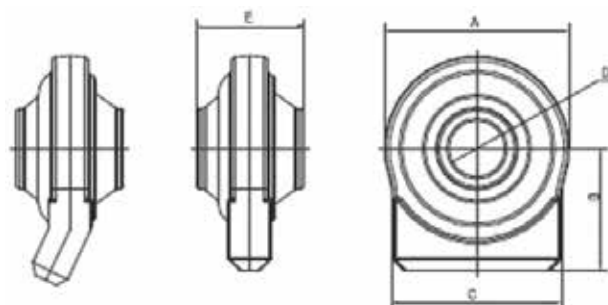
NUMER	d	h	D	D1	L
JAG98-0825	19.0	44	M24X2.5	M20X2.5	470 620
JAG98-0826	19.0	44	M27X3	M24X2	440 600
JAG98-0827	25.0	51	M27X3	M24X2	440 600
JAG98-0828	19.0	44	M27X3	M24X2	510 670
JAG98-0829	25.4	51	M27X3	M24X2	510 670

Wyżej wymienione części zamienne nie są częściami oryginalnymi. Oryginalne numery podano jedynie w celach porównawczych. Kopiowanie całości lub fragmentów katalogu bez pisemnej zgody zabronione. Zastrzegamy sobie prawo do ewentualnych błędów.

Przeguby kulowe

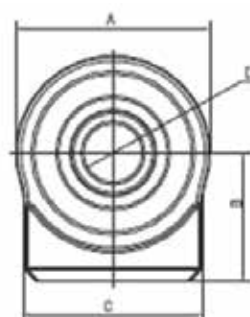


NUMER	D	E	A	B	C
JAG98-0903	19	44	57	50.8	-
JAG98-0904	19	44	62	34	-
JAG98-0905	20	44	62	34	-
JAG98-0906	22.1	44	62	34	-
JAG98-0907	25.4	51	66	60	-
JAG98-0077	19	44	54	55	25.4
JAG98-0078	25.4	51	76	73	30



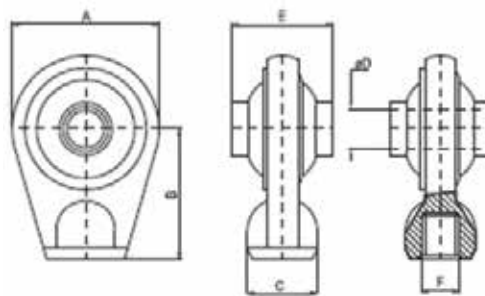
NUMER	D	E	A	B
JAG98-0908	16	20	46	26
JAG98-0084	16	20	46	60
JAG98-0909	18	35	65	43
JAG98-0085	19	35	65	43
JAG98-0086	22.1	35	65	43
JAG98-0087	22.1	35	66	70
JAG98-0910	22.1	35	68	90
JAG98-0911	22.1	35	68	90
JAG98-0912	22.1	35	76	50
JAG98-0913	25.4	35	76	50
JAG98-0914	25.4	35	76	50

Przeguby kulowe

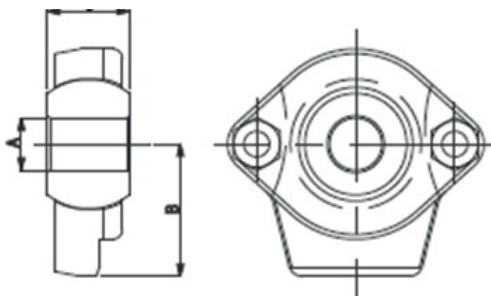


NUMER	D	E	A	B	C
JAG98-0088	28.4	35	76	50	70
JAG98-0915	28.4	35	76	50	70
JAG98-0089	25.4	38	78	80	70
JAG98-0916	28.4	38	78	80	70
JAG98-0090	22/28	45	80	65	70
JAG98-0917	22/28	45	80	65	70
JAG98-0918	25.4	45	80	65	70
JAG98-0919	28.4	45	80	65	70
JAG98-0920	28.4	45	80	65	70
JAG98-0091	25.4	38	80	80	70
JAG98-0921	28.4	38	80	80	70
JAG98-0092	28.4	45	80	80	70
JAG98-0922	22.1	35	83	55	70
JAG98-0923	25.4	35	83	55	70
JAG98-0924	28.4	35	83	55	70
JAG98-0925	28.4	45	83	55	70
JAG98-0926	28.4	45	83	75	79
JAG98-0927	28.4	45	90	82	76
JAG98-0928	28.4	45	96	65	70
JAG98-0929	30	45	96	65	70
JAG98-0930	32	45	96	65	70
JAG98-0931	34	45	96	65	70
JAG98-0093	28.4	45	108	65	80
JAG98-0094	37	45	108	65	80

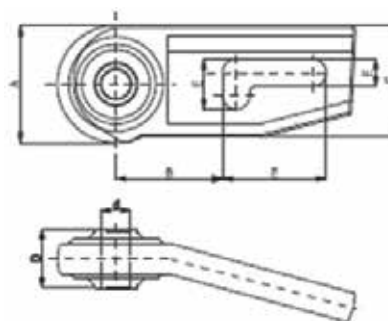
Przeguby kulowe



NUMER	D	E	A	B	C
JAG98-0081	32	51	83	65	50
JAG98-0082	25.4	51	85	70	50
JAG98-0083	32	51	92	65	50
-	-	-	-	-	-

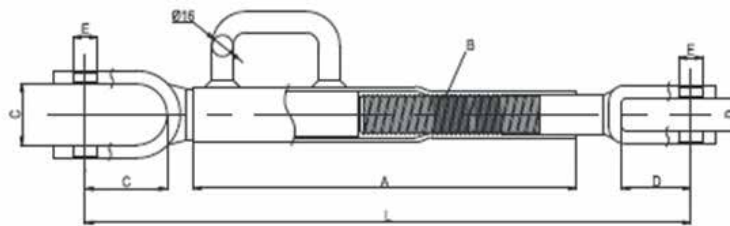


NUMER	A	C	B
JAG98-0933	22.1	35	55
JAG98-0934	25.4	35	55
JAG98-0935	28.4	35	55
JAG98-0936	28.4	45	55

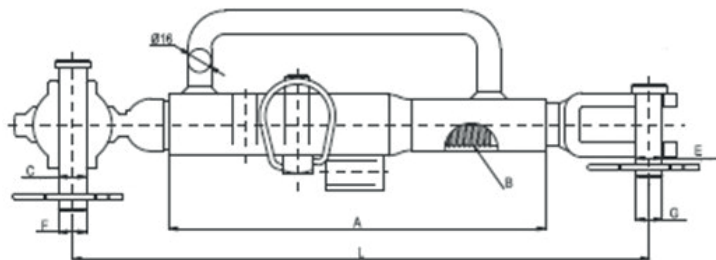


NUMER	d	D	A	B	C	E
84450240.01	28.4	45	76	85	95	28X45X95
84450250.01	28.4	45	76	85	95	28X45X95
87450080.01	37	45	94	90	95	28X45X95
87450090.01	37	45	94	90	95	28X45X95

Ramiona regulowane



A	B	C	D	E
290	M30X3.5 RH	46X62	24X52	18.5
490	M30X3.5 RH	46X62	24X52	18.5



A	B	C	D	E
258	M30X3.5 RH	19.0 (TL END)	24X48	18.5

Ramiona regulowane

Wieszaki



1663853M91.01



42371110.01



46650200.01



1663843M91.01



42371080.01

NUMER JAG

46/65-011/0.01

1663853M91.01

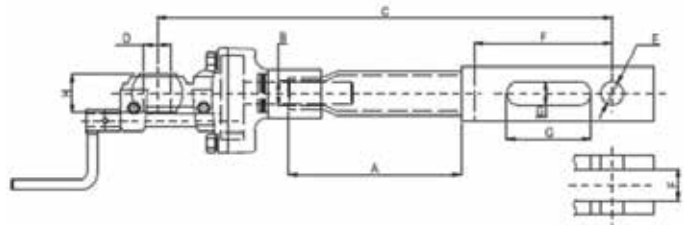
42/37-111/0.01

46/65-020/0.01

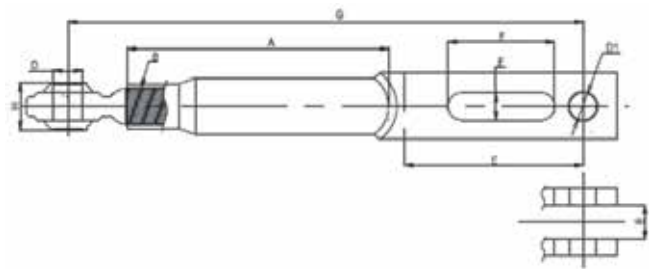
1663842M91.01

42/37-108/0.01

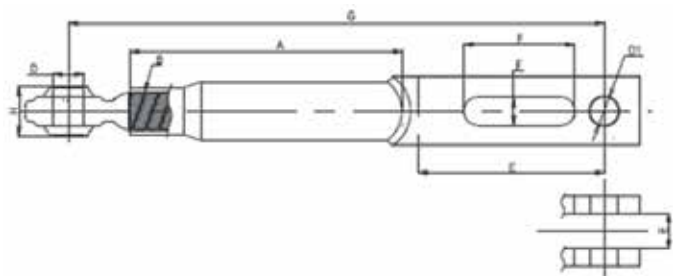
Wieszaki



NUMER	A	B	C	D	H	E	F
80450979.01	270	M30X3.5 RH	550	28.4	45	25.4	37X100
84450009.01	270	M30X3.5 RH	550	28.4	45	25.4	37X100
89450979.01	200	M36X3.0 RH	520	28.4	45	25.4	33X172
87450009.01	200	M36X3.0 RH	520	28.4	45	25.4	33X172



NUMER	A	B	D	H	D1	E	F
89450989.01	250	M36X3.0 RH	28.4	45	25.4	33X172	26X95



NUMER	A	B	D	H	D1	E	F
86450989.01	350	M30X3.5 RH	28.4	45	25.4	37X100	80

Wyżej wymienione części zamienne nie są częściami oryginalnymi. Oryginalne numery podano jedynie w celach porównawczych. Kopiowanie całości lub fragmentów katalogu bez pisemnej zgody zabronione. Zastrzegamy sobie prawo do ewentualnych błędów.

Wieszaki



NUMER	L
JAG98-0956	495-565
JAG98-0957	500-600
JAG98-0958	475-575
JAG98-0959	600-690
JAG98-0960	545-640
JAG98-0961	520-630
JAG98-0962	565-675
JAG98-0963	665-770
JAG98-0964	575-660
JAG98-0965	510-605
JAG98-0966	565-655
JAG98-0967	650-760
JAG98-0968	560-660
JAG98-0969	725-825

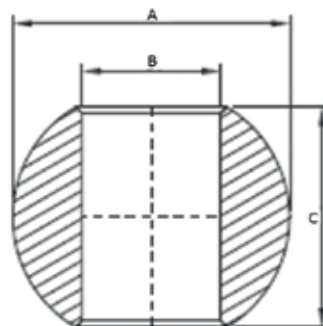


NUMER
JAG98-0971



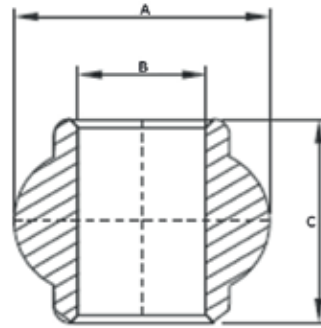
NUMER
JAG98-0974

Kule

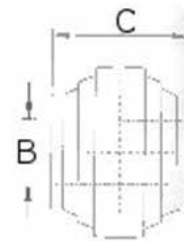
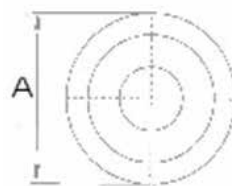


NUMER	B	A	C
JAG98-0999	16	28	20
JAG98-1000	16	32	25.4
JAG98-1001	19	44	35
JAG98-0095	22.1	44	35
JAG98-1002	22.1	48	35
JAG98-1003	28.4	48	35
JAG98-1004	25.4	50	38
JAG98-1005	25.4	50	40
JAG98-1006	28.4	50	38
JAG98-1007	35	54	35
JAG98-0096	22.1	56	35
JAG98-1008	22.1	56	45
JAG98-1009	25.4	56	35
JAG98-1010	25.4	56	45
JAG98-1011	28.4	56	35
JAG98-0097	28.4	56	45
JAG98-0098	37	56	38
JAG98-1012	28.4	62	45
JAG98-1013	28.4	63.5	45
JAG98-0099	28.4	64	45
JAG98-1014	28.4	64	54
JAG98-0100	37.1	64	45
JAG98-1015	38	64	45
JAG98-0101	37	85	57
JAG98-0102	51	85	57

Kule

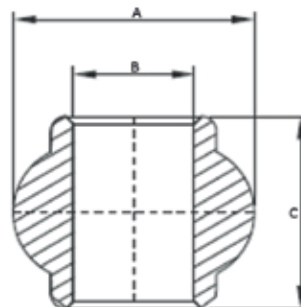


NUMER	B	A	C
JAG98-1016	19	38	44
JAG98-1017	20	38	35
JAG98-1018	20	38	44
JAG98-1019	22.1	38	35
JAG98-1020	22.1	38	44
JAG98-1021	20	44	51
JAG98-1022	20	46	44
JAG98-1023	20	46	51
JAG98-1024	22.1	46	44.5
JAG98-1025	25.4	46	42
JAG98-1026	25.4	46	44
JAG98-1027	25.4	46	51
JAG98-1028	28.4	46	45
JAG98-1029	18	50	48
JAG98-0103	19	50	44
JAG98-1030	20.2	50	44
JAG98-1031	22.1	50	51
JAG98-1032	22.25	50	45
JAG98-1033	23	50	51
JAG98-1034	25.4	50	44

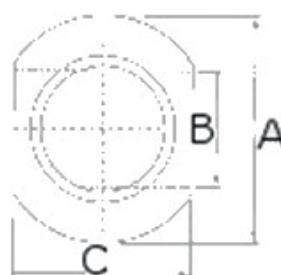


NUMER	B	C
JAG98-1050	19	44

Kule



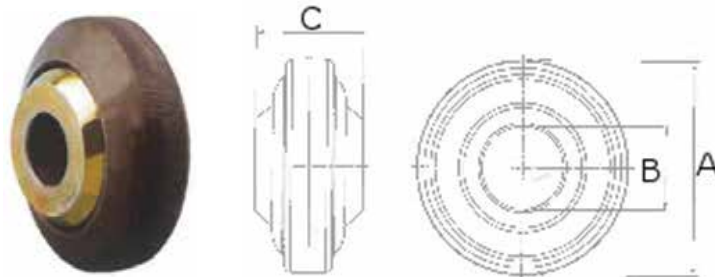
NUMER	B	A	C
JAG98-1035	25.4	50	49
JAG98-1036	25.2	50	51
JAG98-0104	25.4	50	51
JAG98-1038	30	50	51
JAG98-1039	28.4	52	45
JAG98-1040	19	54	60
JAG98-1041	25.4	54	51
JAG98-1042	28.4	54	45
JAG98-1043	30	54	55
JAG98-1037	35	54	55
JAG98-0105	25.4	60	51
JAG98-0106	32	60	51
JAG98-1044	25.4	62	51
JAG98-1045	32	62	51
JAG98-0107	32	78	63
JAG98-1046	40	78	65
JAG98-1047	40	78	75
JAG98-0108	45	78	63
JAG98-1048	45	78	75
JAG98-1049	50	78	75



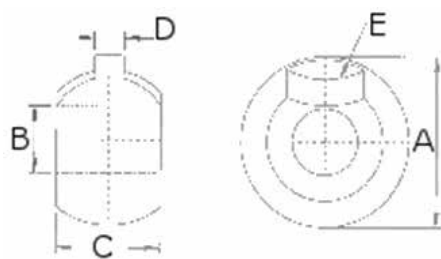
NUMER	B	A	C
JAG98-1061	22.1/28.4	56	45

Wyżej wymienione części zamienne nie są częściami oryginalnymi. Oryginalne numery podano jedynie w celach porównawczych. Kopiowanie całości lub fragmentów katalogu bez pisemnej zgody zabronione. Zastrzegamy sobie prawo do ewentualnych błędów.

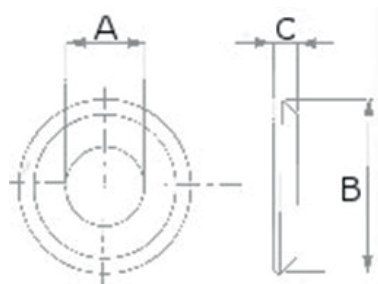
Kule



NUMER	B	C	A
JAG98-1051	19.0	35	70
JAG98-1052	22.1	34	70
JAG98-1053	25.4	44	70
JAG98-1054	28.4	33	70
JAG98-1055	28.4	45	70
JAG98-1056	25.4	35	82
JAG98-1057	28.4	35	82
JAG98-1058	29	35	82
JAG98-1059	29	44.5	82
JAG98-1060	35	35	82

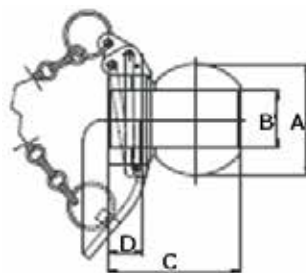


NUMER	B	A	C	D	E
JAG98-1062	22.1	57	35	10	R35



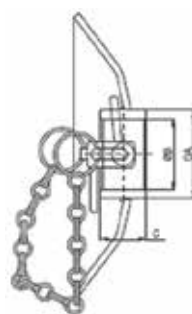
NUMER	A	B	C
JAG98-1063	28.4	56	7
JAG98-1064	28.4	64	7
JAG98-1065	37.1	64	7

Kule



Kule z kołnierzem

NUMER	B	A
JAG98-0109	22.1	44
JAG98-0110	22.1	56
JAG98-0111	28.4	56
JAG98-0112	37.1	56
JAG98-0113	28.4	64
JAG98-0114	37.1	64
JAG98-0115	37.1	64



Kołnierze

NUMER	B	A
JAG98-0116	28.4	45
JAG98-0117	37.1	45

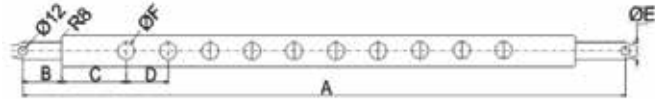


Zawlecзки

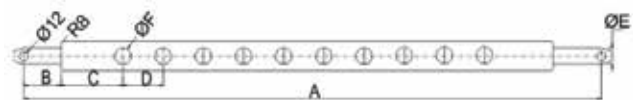
NUMER	B	A
JAG98-1066	11	48
JAG98-1067	15	56

Wyżej wymienione części zamienne nie są częściami oryginalnymi. Oryginalne numery podano jedynie w celach porównawczych. Kopiowanie całości lub fragmentów katalogu bez pisemnej zgody zabronione. Zastrzegamy sobie prawo do ewentualnych błędów.

Belki polowe

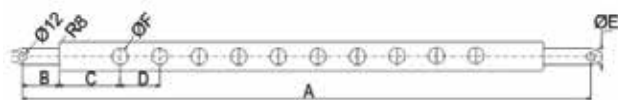


NUMER	A	B	C	D	E	F
JAG98-1507	774	57	75	51	22	19
JAG98-1508	775	57.5	75	51	22	22.4
JAG98-1509	660.4	57	76.2	63.5	22.2	19.5
JAG98-1510	613	51	84.5	57	22	22.4
JAG98-1511	610	51	83	57	22	22
JAG98-1512	770	50	105	76.6	22	22
JAG98-1513	420	57	66	58	22	22
JAG98-1514	421	58	61	68	22	22
JAG98-1515	774	57	75	51	22	19
JAG98-1516	775	57	114	54	22	22
JAG98-1517	610	51	74	60	16	16
JAG98-1518	580	50	80	80	22	22
JAG98-1519	580	50	120	120	22	22



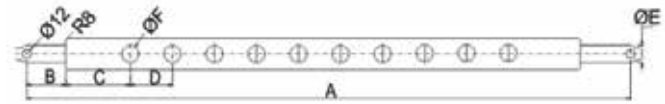
NUMER	A	B	C	D	E
JAG98-1595	962	51	110	80	28.5
JAG98-1596	910	55	80	80	28
JAG98-1597	960	62	78	68	28
JAG98-1598	980	55	87	87	28
JAG98-1599	800	70	70	65	28
JAG98-1600	933	60	81.5	65	28

Belki polowe



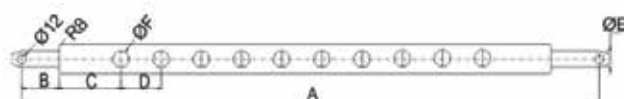
NUMER	A	B	C	D	E	F	IL. OTWORÓW
JAG98-1520	620	50	72	47	28	28	9
JAG98-1521	505	52.5	68	66	22	19.5	5
JAG98-1522	800	58	86	64	22	22	9
JAG98-1523	774	57	75	51	22	19	11
JAG98-1524	720	58	70	58	22	22	9
JAG98-1525	613	51	85	57	22	19	7
JAG98-1526	960	55	100	65	28	22	11
JAG98-1527	764	52	60	54	22	22	11
JAG98-1528	765	53	60	54	22	20	11
JAG98-1529	780	60	60	54	28	20	11
JAG98-1530	758	49	114	54	22	20	9
JAG98-0065	780	60	114	54	28	20	9
JAG98-1531	762	51	114	54	22	20	9
JAG98-1532	770	55	110	55	22	20	9
JAG98-1533	770	55	110	55	28	20	9
JAG98-1534	648	49	113	54	22	20	7
JAG98-1535	440	55	110	55	22	20	3
JAG98-1536	685	58	80	75	22	22	8
JAG98-1537	660	70	70	65	28	22	9
JAG98-1538	540	70	70	65	28	22	5
JAG98-1539	570	85	70	65	28	22	5
JAG98-1540	650	65	60	50	22	26	9
JAG98-1541	800	58	82	65	22	22	9

Belki polowe



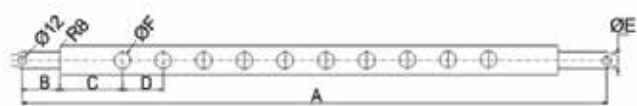
NUMER	A	B	C	D	E	F	IL. OTWORÓW
JAG98-1542	800	70	114	54	28	22	9
JAG98-1543	766	60	60	52.6	28	20	11
JAG98-1544	937	60	88.5	80	28	26	9
JAG98-1545	680	51	115	58	22	20	7
JAG98-1546	683	49	82.5	70	22	20	7
JAG98-1547	510	53	94	54	22	20	5
JAG98-1548	540	55	75	70	28	20	5
JAG98-1549	562	60	181	80	28	28.2	7
JAG98-1550	766	53	60	54	22	20	11
JAG98-1551	920	60	100	60	28	22	11
JAG98-1552	872	61	159	54	28	20	9
JAG98-1553	800	58	82	65	22	22	9
JAG98-1554	800	70	70	65	28	22	9
JAG98-1555	620	50	72	47	22	22	9
JAG98-1556	622	50	71	47.5	22	36	9
JAG98-1557	780	60	60	54	28	20	11
JAG98-1558	780	60	60	54	22	20	11
JAG98-1559	780	60	60	54	28	20	11
JAG98-1560	550	53	113	54	22	20	7
JAG98-1561	962	60	181	80	28	25	7
JAG98-1562	962	60	181	80	28	28	7
JAG98-1563	796	57.5	101	60	22	22.2	9
JAG98-1564	800	70	70	65	28	22	9
JAG98-1565	800	52	78	54	22	22	11
JAG98-1566	800	60	70	54	28.4	22	11
JAG98-1567	750	55	64	64	22	19.5	9
JAG98-1568	800	70	70	65	28	22	9
JAG98-1569	774	57	75	51	22	22	11
JAG98-1570	800	58	126	54	22	22	9
JAG98-1571	510	55	35	55	22	20	7

Belki polowe



NUMER	A	B	C	D	E	F	IL. OTWORÓW
JAG98-0066	930	55	110	100	28	28.4	7
JAG98-1572	750	55	80	80	28	25.4	7
JAG98-1573	890	64	126	85	28	29	7
JAG98-0067	940	60	152	86	28.4	28.4	7
JAG98-1574	981	60	154.5	92	28.4	28.4	7
JAG98-0068	861	60.5	140	115	28.4	27	5
JAG98-1575	960	55	100	65	28	26	11
JAG98-1576	940	55	85	110	28	30(2)	7
JAG98-1577	800	58	104.5	95	28.5	20	6
JAG98-1578	825	55	87.5	65	28	22	11
JAG98-1579	932	60	76	55	28	19	13
JAG98-1580	760	60	60	75	51	19	11
JAG98-1581	940	60	76	55.6	28	19	13
JAG98-1582	940	60	76	55.6	28	22.4	13
JAG98-1583	876	50	100	96	28	28	7
JAG98-1584	930	55	85	109	28	26	7
JAG98-1585	933	55	86.5	65	28	22	11
JAG98-1586	960	55	100	65	28	22	11
JAG98-1587	890	55	124	88.6	28	28	11
JAG98-1588	932	60	86	64	28	28	11
JAG98-1589	945	60	92.5	80	28	22	9
JAG98-1590	933	55	86.5	65	28	22	11
JAG98-1591	932	61.7	49.7	86.2	28	26	7
JAG98-1592	945	60	92.5	80	28	33	9
JAG98-1593	940	55	85	110	28	29	7
JAG98-1594	935	50	172.5	80	28.4	25	7

Belki polowe



NUMER	A	B	C	D	E	F	IL. OTWORÓW
JAG98-1611	1094	65	152	110	36	32	7
JAG98-1612	1085	60	82	80	36	33	11

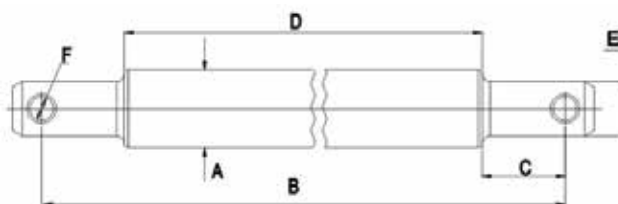


NUMER	NUMER
JAG98-1613	JAG98-0064

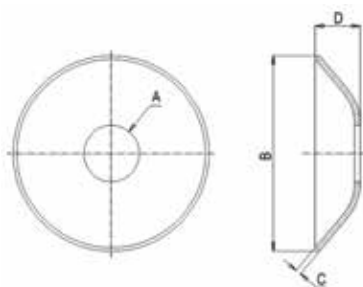


NUMER	A	B	C	D	E	F	IL. OTWORÓW
JAG98-1601	890	63	112	90	28	28	7
JAG98-1602	940	60	125	95	28.5	26	7
JAG98-1603	960	55	212.5	141.5	28	28.5	3
JAG98-1604	1000	60	160	140	28	28	5
JAG98-1605	934	57	110	100	28	28	7
JAG98-1606	930	55	110	100	28	28	7
JAG98-1607	862	60	122	83	28.4	26	7
JAG98-0069	770	56	164.5	164.5	28.5	26.5	3
JAG98-1608	1085	60	152.5	110	36	33	7
JAG98-1609	1094	65	152	110	36	32	7
JAG98-1610	1084	60	202	140	28.5	26	5

Osie nośne



NUMER	A	B	C	D	E
JAG98-1614	40	935	67	800	28
JAG98-0070	45	950	62	825	28
JAG98-0071	45	950	62	825	36
JAG98-0072	45	950	62	825	28
JAG98-0073	45	950	62	825	36
JAG98-1615	50	935	55	825	28
JAG98-1616	50	935	67	800	36
JAG98-0074	55	935	67	800	36
JAG98-1617	60	935	67	800	36

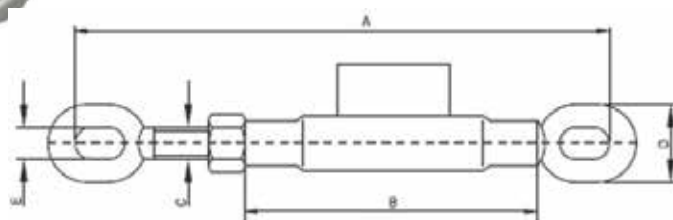


Kołnierze

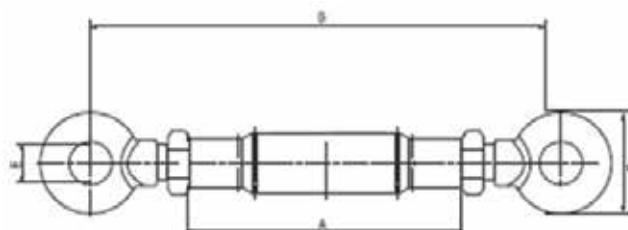
NUMER	A	B	C	D
JAG98-1618	40	140	4	32
JAG98-0075	45	140	4	32
JAG98-1619	50	140	4	32
JAG98-0076	55	140	4	32
JAG98-1620	60	140	4	32

Wyżej wymienione części zamienne nie są częściami oryginalnymi. Oryginalne numery podano jedynie w celach porównawczych. Kopiowanie całości lub fragmentów katalogu bez pisemnej zgody zabronione. Zastrzegamy sobie prawo do ewentualnych błędów.

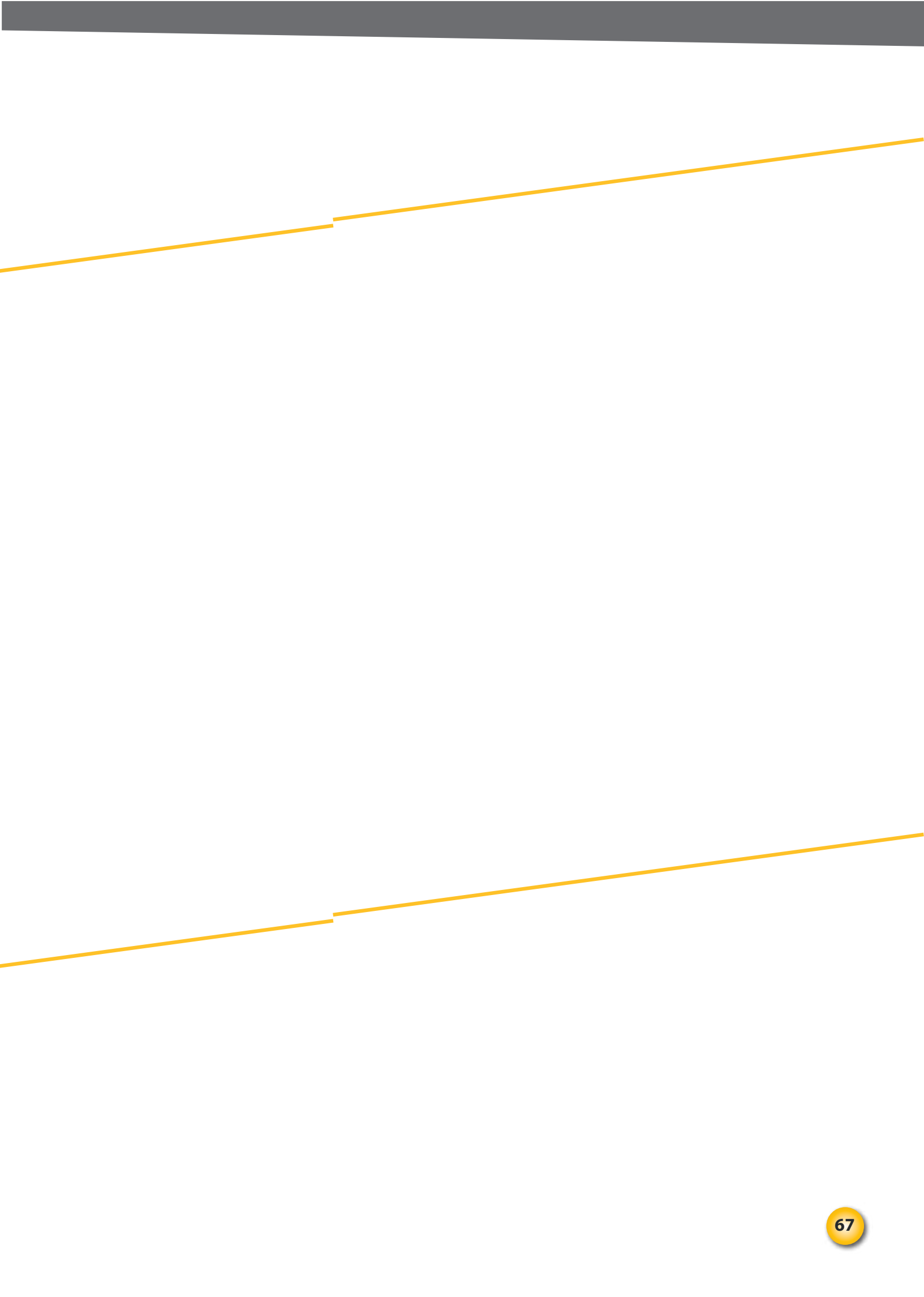
Śruby rzymskie

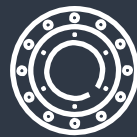


NUMER	A	B	C	D
JAG98-0041	245-315	130	M16X2	38
JAG98-0042	245-320	135	M18X2.5	38
JAG98-0759	280-350	130	M20X2.5	38
JAG98-0043	280-350	150	M22X2.5	38
JAG98-0044	300-370	150	M24X2.5	55
JAG98-0760	300-370	150	M24X2.5	55



NUMER	A	B	C	D
JAG98-0761	210-300	130	M16X2	45
JAG98-0762	230-330	130	M 20X2.5	45





P o l e c a m y

części do maszyn rolniczych

J.A. Gąska Sp. J. Gotkowice 85
32-048 Jerzmanowice Poland
Tel. +48 12 389 09 41
www.gaska.com.pl